



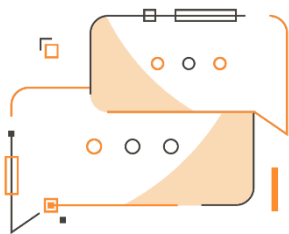
Over- and Under-Delivery Quantities

manage tolerance on the quantities of goods, in excess or shortage in Microsoft Dynamics 365 Business Central

Over- and Under-Delivery Quantities

App for Microsoft Dynamics 365 Business Central

Over- and Under-Delivery Quantities allows you to manage tolerance on the quantities of goods, in excess or shortage, to ship or to load in Microsoft Dynamics 365 Business Central.



Do you want the system to allow you to ship or receive quantities greater than ordered? Do you need to send or receive quantities less than ordered?

How it works

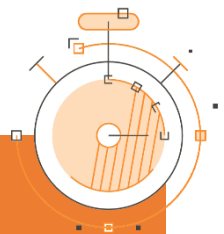
Thanks to the App Over- and Under-Delivery Quantities it is possible to manage tolerance on the quantities of goods, in excess or shortage, for shipment/receipt/return.

- The feature is implemented for both purchase and sales orders
- It is active also in warehouse management

Quick Guide

Ready to go in 3 steps:

1. Enter the setup for overdelivery quantity for outbound goods
2. Create a Sales order with "Quantity to Ship" greater than "Quantity"
3. Post the document





Over- and Under-Delivery Quantities - SUMMARY

Press ALT + Q and digit "OVR" for a summary of the involved functionalities:



Over-/Underdelivery Setup (OVR)

Type	Direction	Source Type	Source No.	Item Category Code	Item No.	Variant Code	Tolerance Type	Tolerance Value	Show Warning	Priority
Overdelivery	Outbound	Customer	20000		1000		Unlimited	0	<input type="checkbox"/>	0
Overdelivery	Inbound	Vendor	40000	SCRIVANIA			Quantity (Base)	5	<input type="checkbox"/>	10
Overdelivery	Both	Vendor	40000	SCRIVANIA			Unlimited	0	<input type="checkbox"/>	20
Underdelivery									<input type="checkbox"/>	

Thanks to a very detailed setup the app allows you to manage the sending or receiving of quantities

- You can choose whether the lines you set are active Customer side or Vendor side, or both.
- Tolerance can be unlimited, in quantity or in percentage
- You can choose whether to be alerted when you enter an excessive amount; confirming you can proceed to the posting, otherwise the operation is canceled

Subscription

Some features of Over- and Under-Delivery Quantities app require a subscription.

The subscription can be activated from Subscription control panel or directly from the notification messages that the system proposes, by clicking on the link that allows you to start the subscription wizard.

Contact us for more info:

www.eos-solutions.it/en/contact-support.html



www.eos-solutions.it