



## CLOUD MIGRATION

---

Procedure, strumenti e best practice

# Speaker



**Flora Gitti**  
Sales Manager Customer base



**Luca Borio**  
Azure MWP Business Line  
Manager



**Alberto Duò**  
Azure Architect



**Alvise Giacomini**  
Azure Team Leader



**Giuseppe Russo**  
Cloud Solution Architect  
Microsoft



# Agenda

Assesment as a Service, in  
collaborazione con Microsoft

Microsoft 365 Migration

Jourure to Azure

Business Central SaaS Migration





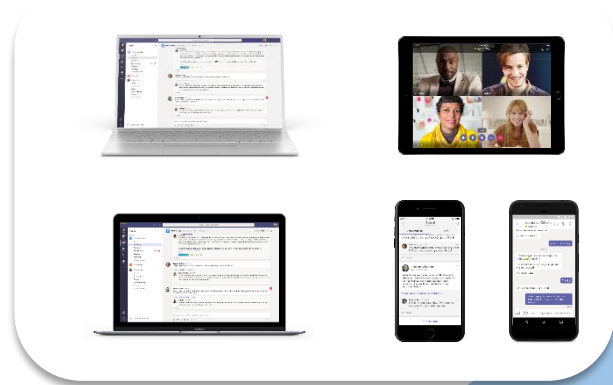
# INTRODUCTION



**Luca Borio**  
Azure MWP Business Line  
Manager

# Le sfide di oggi le necessità di domani ~~ieri~~

## Dispositivi



## Condivisione della conoscenza e collaborazione



## Luoghi di lavoro



## Attacchi informatici

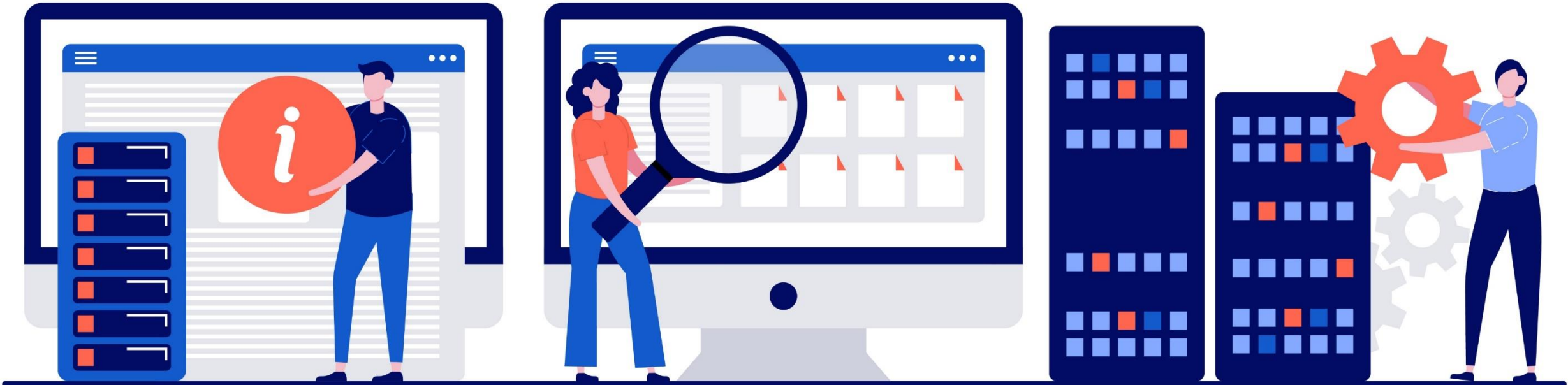


## Continuità di servizio



# Sistemi informativi aziendali

- Gestione **accessi** ai sistemi informativi
- **Posta**
- **Dati** (Documenti office, file, fotografie, data base...)
- Sistema **ERP** (Contabilità, logistica, produzione, analisi, qualità ...)
- Sistemi **MES** ( Controllo e avanzamento della produzione )
- Relazione con il **cliente** (CRM, Portali clienti, Servizi di assistenza)
- Gestione degli **edifici** ( Controllo accessi, Sistemi di video sorveglianza ...)
- **Risorse Umane** (Gestione presenze, Note spese, Gestione dotazioni personali )



# La migrazione al cloud è ancora una sfida?

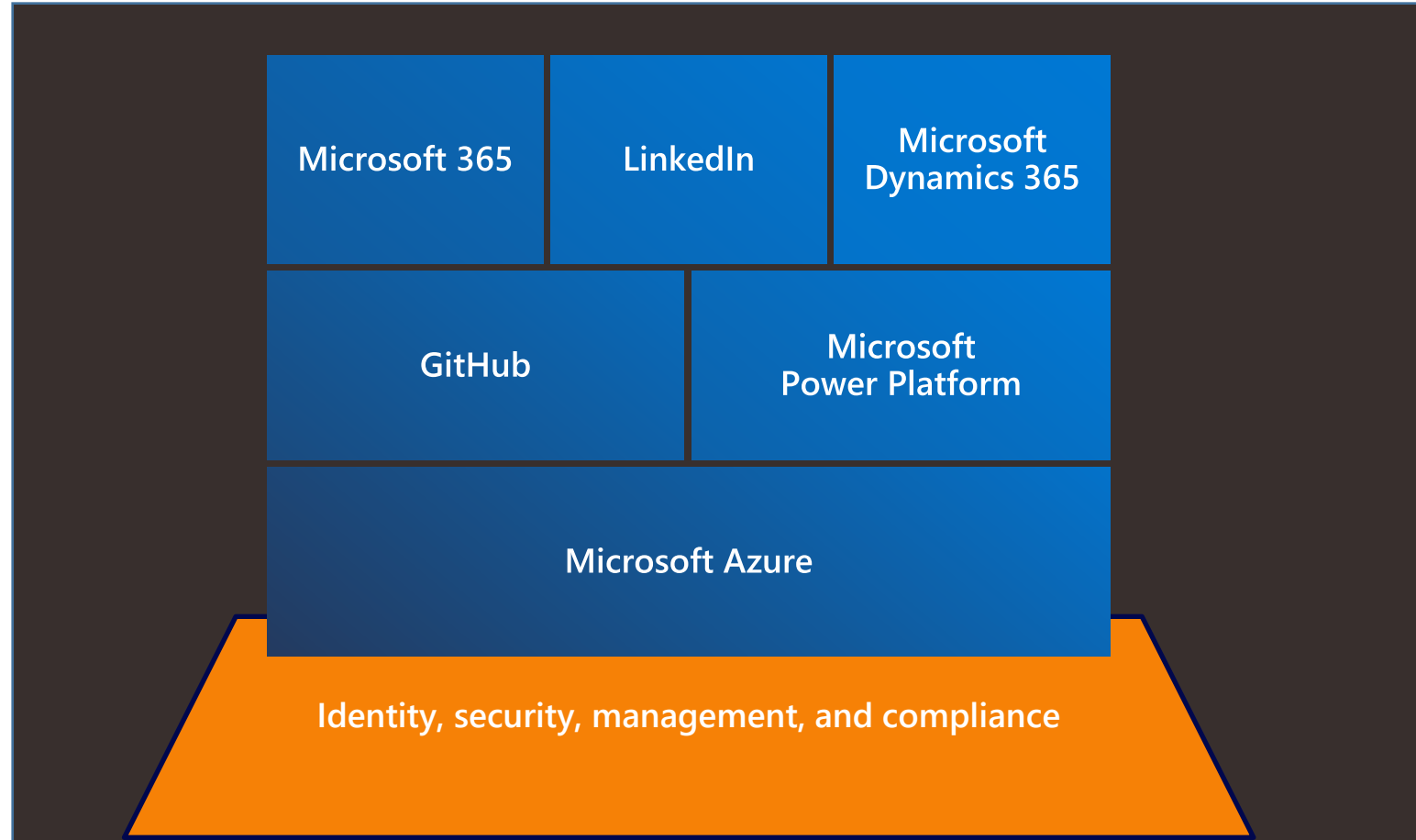
La migrazione al cloud è **ormai una attività ben codificata.**

Grazie agli assessment Microsoft possiamo analizzare interi sistemi informativi mediante **procedure basate su dati certi e verificabili.**

La possibilità di gestire **ambienti ibridi** (On-prem-cloud) ci rende liberi nei temi e nei modi così da assicurare ad ogni cliente una migrazione sartoriale. Su misura!



# Microsoft Cloud



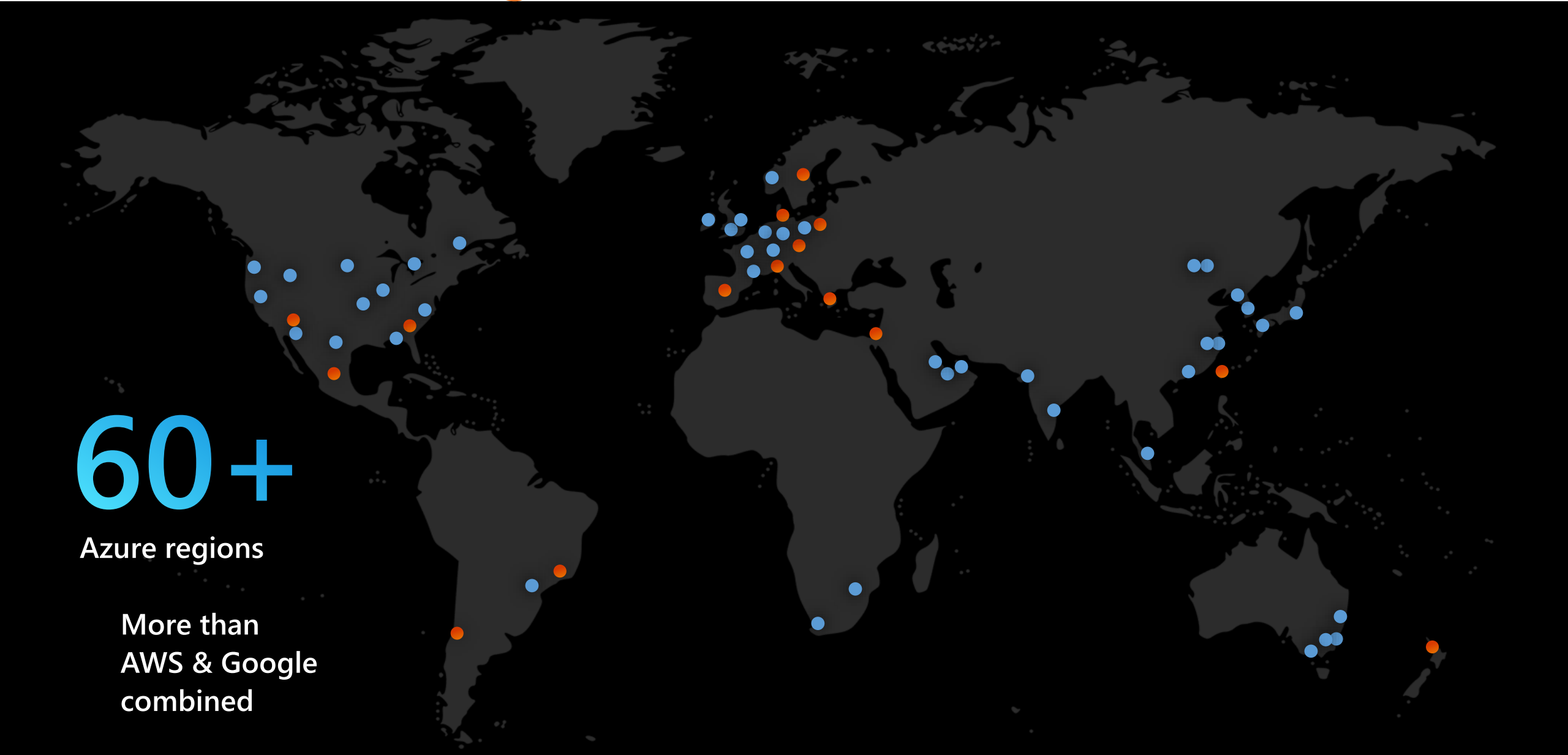


# Microsoft Azure regions

60+

Azure regions

More than  
AWS & Google  
combined



# Global



**60+** Azure regions

Largest geographical footprint of any cloud provider with more than **60+** Azure regions

# Secure



Microsoft Cyber Defense Operations Center

**>3,500** full-time security professionals

**6.5 trillion** global signals daily

**\$1 billion** annual cybersecurity investment

# Compliant

**91** Compliance offerings

## GLOBAL

- ISO 27001:2013
- ISO 27017:2015
- ISO 27018:2014
- ISO 22301:2012
- ISO 9001:2015
- ISO 20000-1:2011
- SOC 1 Type 2
- SOC 2 Type 2
- SOC 3
- CIS Benchmark
- CSA STAR Certification
- CSA STAR Attestation
- CSA STAR Self-Assessment
- WCAG 2.0 (ISO 40500:2012)

## U.S. GOVT

- FedRAMP High
- FedRAMP Moderate
- EAR
- ITAR
- DoD DISA SRG Level 5
- DoD DISA SRG Level 4
- DoD DISA SRG Level 2
- DFARS
- DoE 10 CFR Part 810
- NIST SP 800-171
- NIST CSF
- Section 508 VPATs
- FIPS 140-2
- CJIS
- IRS 1075
- CNSSI 1253

## INDUSTRY

- PCI DSS Level 1
- GLBA (US)
- FFIEC (US)
- Shared Assessments (US)
- SEC 17a-4 (US)
- CFTC 1.31 (US)
- FINRA 4511 (US)
- SOX (US)
- 23 NYCRR 500 (US)
- OSFI (Canada)
- FCA + PRA (UK)
- APRA (Australia)
- FINMA (Switzerland)
- FSA (Denmark)
- RBI + IRDAI (India)
- MAS + ABS (Singapore)
- NBB + FSMA (Belgium)
- AFM + DNB (Netherlands)
- AMF + ACPR (France)
- KNF (Poland)
- European Banking Authority (EBA)
- FISC (Japan)
- HIPAA BAA (US)
- HITRUST Certification
- GxP (FDA 21 CFR Part 11)
- MARS-E (US)
- NHS IG Toolkit (UK)
- NEN 7510:2011 (Netherlands)
- FERPA (US)
- CDSA
- MPAA (US)
- FACT (UK)
- DPP (UK)

## REGIONAL

- Argentina PDPA
- Australia IRAP Unclassified
- Australia IRAP PROTECTED
- Canada Privacy Laws
- China GB 18030:2005
- China DJCP (MLPS) Level 3
- China TRUCS / CCCPPF
- EU EN 301 549
- EU ENISA IAF
- EU Model Clauses
- EU – US Privacy Shield
- GDPR
- Germany CS
- Germany IT-Grundschutz workbook
- India MeitY
- Japan CS Mark Gold
- Japan My Number Act
- Netherlands BIR 2012
- New Zealand Gov CIO Framework
- Singapore MTCS Level 3
- Spain ENS High
- Spain DPA
- UK Cyber Essentials Plus
- UK G-Cloud
- UK PASF

# Microsoft's commitments

**\$1B**

Climate Innovation Fund  
over the next four years

**Carbon negative**  
**Water positive**  
**Zero waste**

by 2030

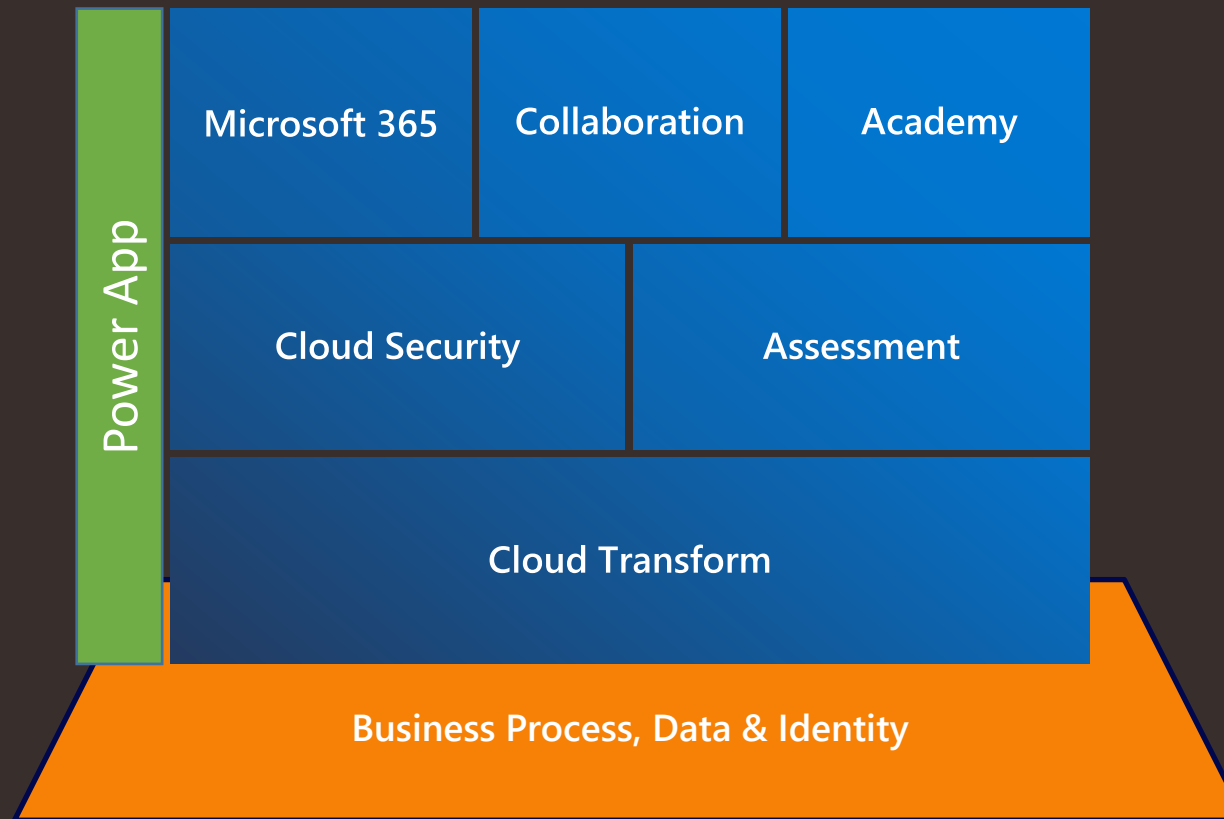
**Planetary computer**

using big data to monitor and  
protect nature



Every company is a digital company

# EOS Azure & Modern Workplace a colpo d'occhio





# ASSESSMENT AS A SERVICE, IN COLLABORAZIONE CON MICROSOFT



**Alvise Giacomini**  
Azure Team Leader

# Solution Assessment

---

## Valutazione della soluzione come servizio Microsoft

- I clienti riceveranno una **valutazione completa della soluzione** direttamente da un consulente di valutazione delle soluzioni Microsoft, completamente finanziato da Microsoft.
- Il **Solution Assessment Consultant di Microsoft** terrà il partner del cliente coinvolto durante tutto il processo di valutazione della soluzione.
- Il risultato finale e i **risultati saranno condivisi sia con il Cliente che con il Partner**, per consentire loro di andare avanti e pianificare i prossimi passi incluso il progetto di migrazione.
- Nel modello **Microsoft Solution Assessment as a Service**, Microsoft fornirà effettivamente la Solution Assessment stessa e il Microsoft Partner costruirà e consegnerà il progetto di migrazione o adozione.



# Assessment as a Service

## Data and Infrastructure

Vengono raccolti i dati relativi ai SO Windows e Linux e ai database SQL evidenziando i prodotti che risultano fuori manutenzione, le metriche sulle performance, la mappa delle dipendenze dei sistemi ...

Aiutiamo i clienti ad ottimizzare i server e gestire i carichi di lavoro, migliorare gli investimenti nelle applicazioni e fornire scenari di migrazione al cloud Azure.

## Cloud Security

Vengono raccolti i dati con il tool CSAT relativi alla security posture online ed on-premise, le azioni da compiere per rafforzare la Cyber Security, l'elenco dei software vulnerabili.

Aiutiamo i clienti a identificare e stabilire delle priorità sul consolidamento dell'infrastruttura informatica e la sua migrazione verso soluzioni cloud sicure ed efficaci.

## Assessment Modern Workspace

Vengono raccolti i dati relativi ai SO e SQL fuori supporto, il ciclo di vita dell'hardware, il livello di Cyber Security, la sostenibilità dell'infrastruttura, l'utilizzo delle piattaforme MS 365 ...

Aiutiamo i clienti a comprendere in modo profondo le soluzioni Microsoft Cloud che migliorano la produttività, riducono i costi e ottimizzano gli investimenti.

## Application and Database Modernization

Vengono raccolti i dati relativi ad applicazioni e database utilizzati.

Aiutiamo i clienti a identificare e stabilire delle priorità per la migrazione delle applicazioni e dei database verso il cloud



# Infrastructure Optimization

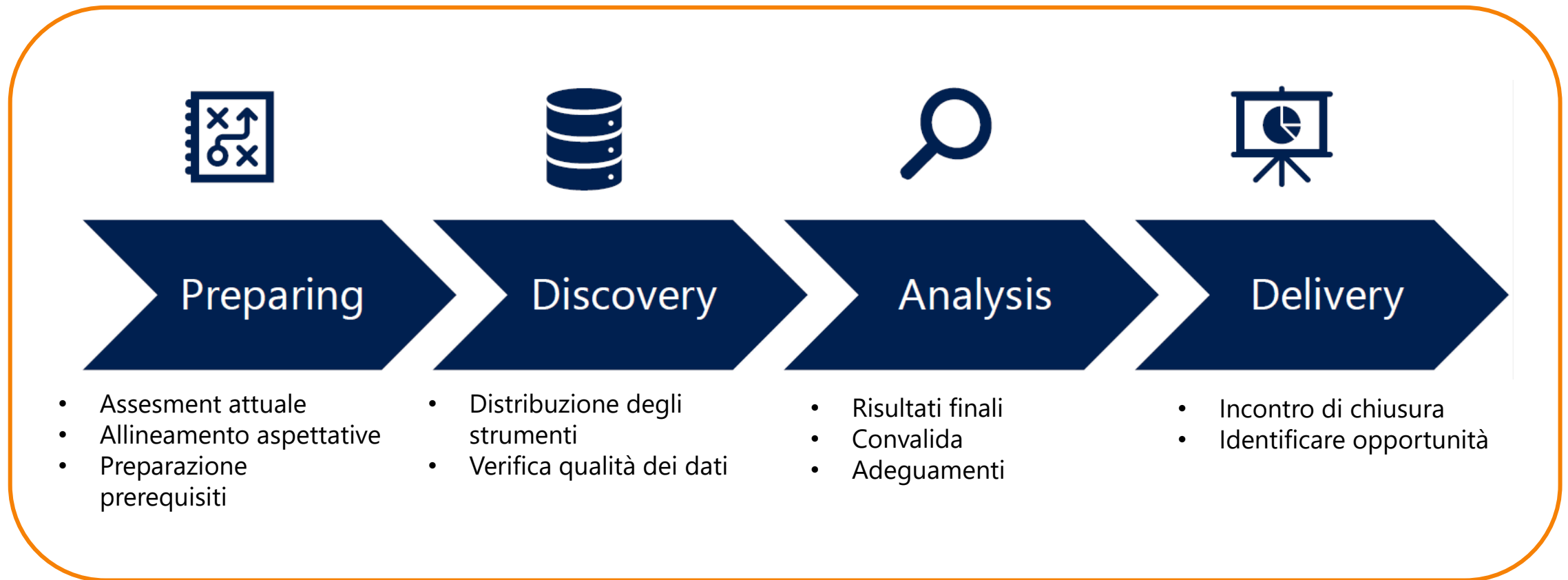
Assistere i clienti per **ottimizzare i server, il carico dei datacenter, gli investimenti** sulle applicazioni e la creazione di scenari per la migrazione verso le VM di Azure:

Utilizziamo **strumenti moderni per raccogliere e analizzare gli endpoint** per 1-2 settimane (aprox) per fornire consigli basati sui dati e approfondimenti come:

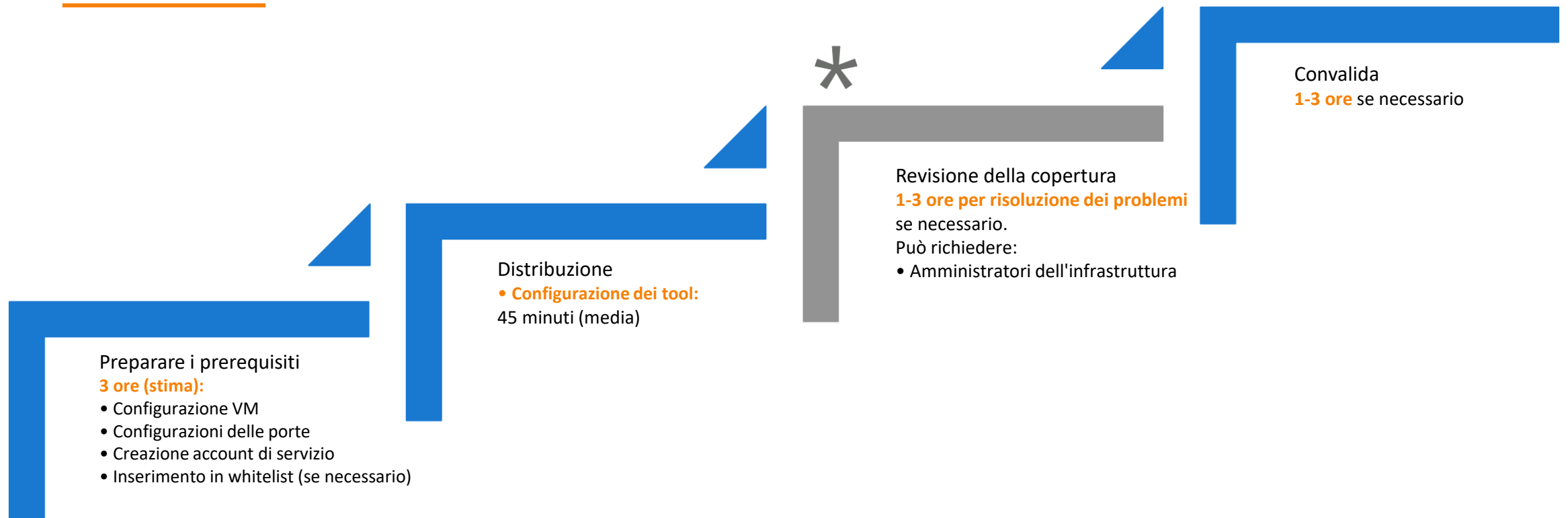
- OS e SQL End of Support
- Performance Metrics
- Dependency Mapping (Netstat)
- Cloud Sizing (IaaS)
- Managed Disks Sizing
- Azure Readiness



# Panoramica del processo



# Tempo investito dal cliente



*I tempi stimati possono variare a seconda dei ruoli interni, delle politiche e procedure (es. controlli sulle modifiche, processi di approvazione)*



# ASSESSMENT REPORT ESEMPI DI OUTPUT

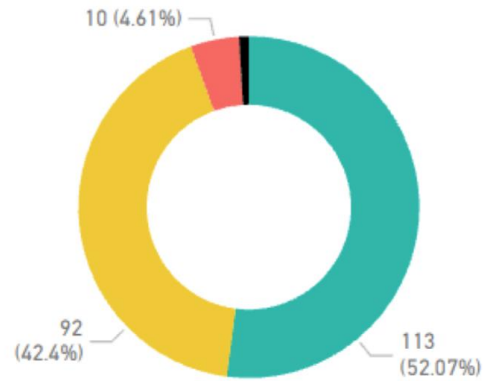


# Operating Systems Lifecycle

Inventoried?	Devices
Inventoried	305
Pending	32
<b>Total</b>	<b>337</b>

## Windows Support Status

● Mainstream ● Extended ● End of Support ● Out

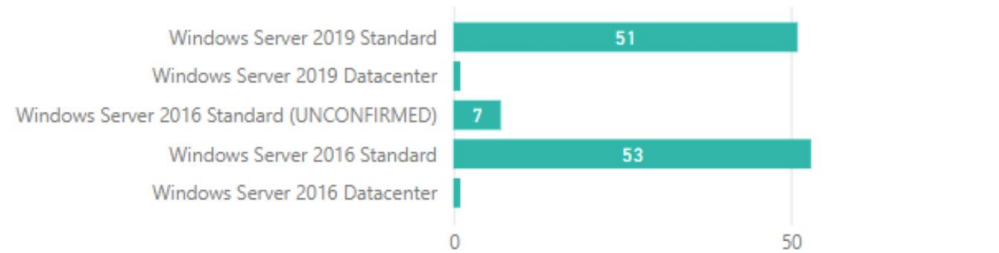


Days Since Last Activity

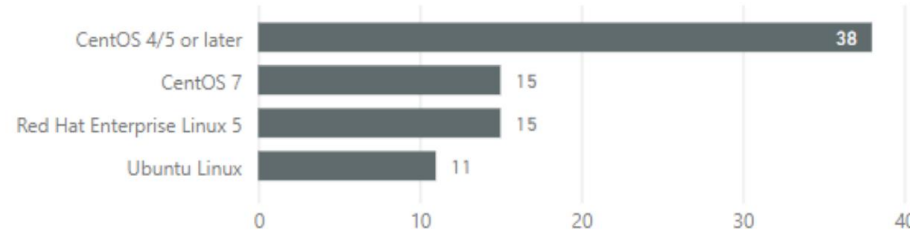
31

## Windows Devices

Support Status (OS) ● End of Support ● Extended ● Mainstream ● Out



## Linux Devices



Type

Platform

Hosting Location



# SQL Overview

SQL Alert?

No Yes

20

Devices

30

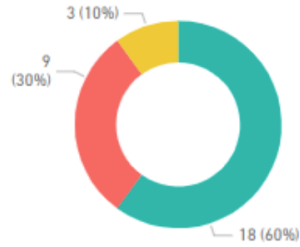
Instances

558

Databases

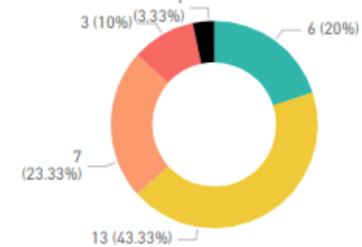
SQL Instances Lifecycle

Mainstream Out Extended



SQL Instances Service Pack Deviation

0 1 2 3 4



Engine State

All

AS State

All

IS State

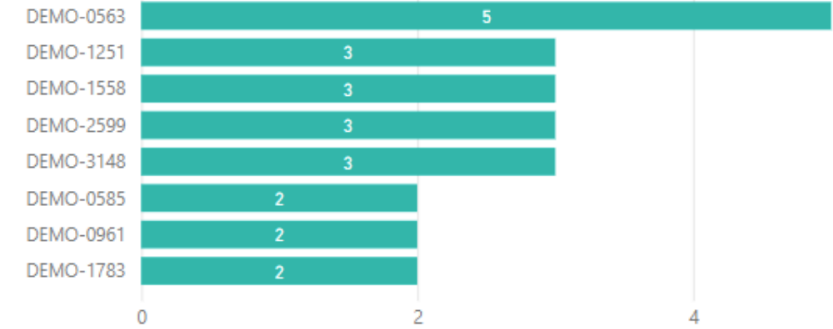
All

RS State

All

Installed Components by Device

Running Components Stopped Components



Edition Enterprise Standard



# Azure Projections



**304**  
Sized Servers

- VM Sizing
- As-is
  - Cost-optimized
  - Right-sized

- Commitment
- 1-year RIs
  - 3-year RIs
  - Pay as you Go

- AHUB Scenario
- Full AHUB
  - No AHUB

ARC Scanned  
All

- Storage Sizing
- As-is
  - Cost-optimized
  - Right-sized

- PayGo/Dev Uptime
- 24h/7d
  - 8h/5d

Estimated Cores for AHUB  
**2076**  
Windows Server  
**92**  
SQL Server

Search

DEMO-0010

DEMO-0022

DEMO-0024

-----

**22,687.98**

As-Is VM Cost Month

**15,119.61**

Cost-optimized VM Cost Month

**33.36%**

Reduction (based on above)

**44,283.65**

PayG Cost Month

**15,964.52**

3yRI Cost Month

**63.95%**

Reduction (based on above)



**15,119.61**

VM Cost Month



**5,340.61**

Storage Cost Month

Selected Scenario

**20,460.22**

Monthly VM+Storage

**245,522.66**

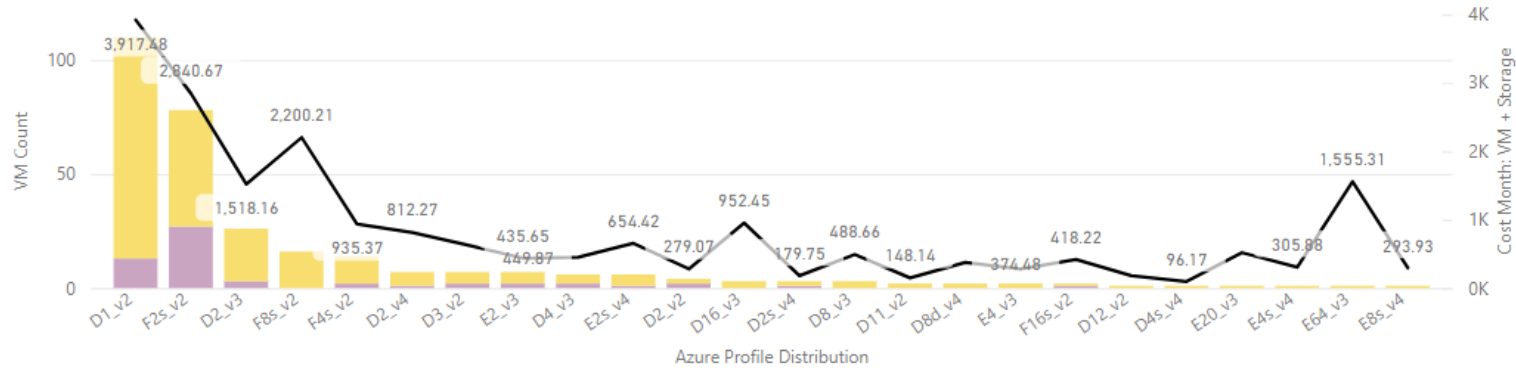
Over 1 year (VM+Storage)

Domain

All

Azure Profile Distribution

Environment ● Dev/Test ● Production ● Cost Month: VM + Storage



Server Name: All | Profile: All | Migration Group: All | SQL Edition: All | Environment: All | Tags: All

Server Name	Operating System	SQL Edition	OnPrem Cores	OnPrem RAM(GB)	Readiness Comment	Defined Profile	Azure Cores	Azure RAM(GB)	Commit VM	Hours Month	VM Cost Month	Storage Cost	Total Cost
DEMO-2087	Windows Server 2019 St...		20	328	Qualifies (1 Disk assu...	E64_v3	64	432	3yRI	730	1,547.02	8.29	1,555.31
DEMO-0346	Windows Server 2016 St...		8	144	Qualifies (1 Disk assu...	E20_v3	20	160	3yRI	730	508.98	8.29	517.27
DEMO-2403	Windows Server 2016 St...		4	16	Qualifies	D1_v2	1	4	3yRI	730	20.73	477.33	498.06
<b>Total</b>			<b>916</b>	<b>3298</b>			<b>193</b>	<b>1063</b>			<b>15,119.61</b>	<b>5,340.61</b>	<b>20,460.22</b>

# Storage & IOPS Analysis



**304**

Storage-Sized Servers

**92,337**

Sum of Total (GB)

**39,773**

Sum of Used (GB)

Storage Sizing Scenario

- As-is
- Cost-optimized
- Right-sized

**5,340.61**

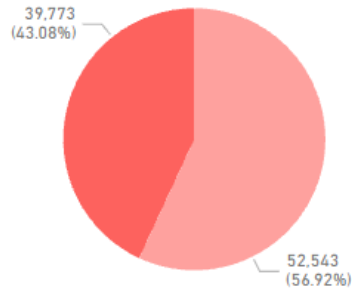
Storage Cost Monthly

ARC Scanned

All

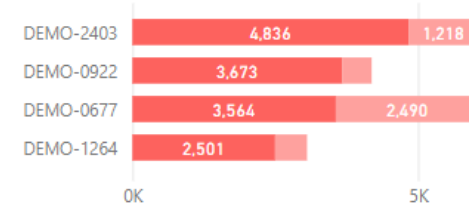
Total Available (GB) and Used (GB)

Available (GB) Used (GB)



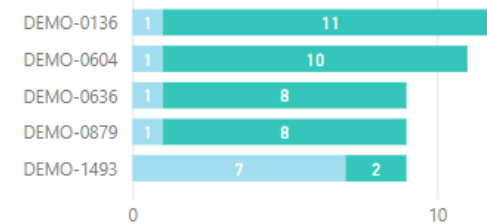
Used vs Available Storage per Server

Used (GB) Available (GB)



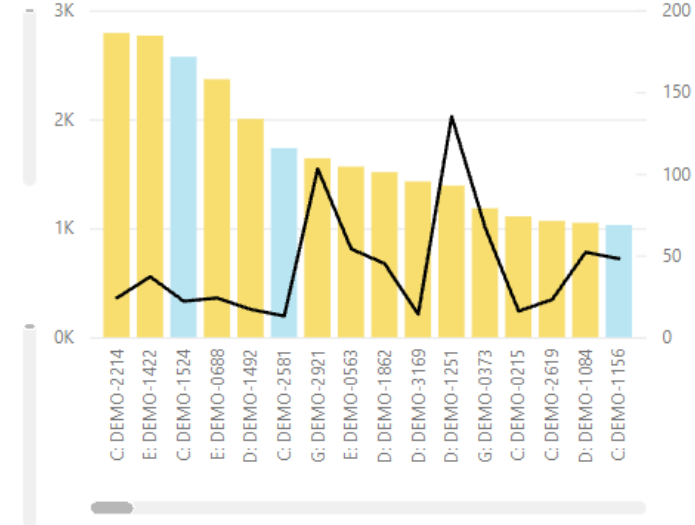
Drive Mix per Server

TierStorage PremiumSSD StandardHDD StandardSSD



IOPS & Throughput Analysis for Performance-Based Storage Level Defi...

PremiumSSD StandardHDD StandardSSD Avg Throughput (MB/sec)



Search

- DEMO-0010
- DEMO-0022
- DEMO-0024

Server Name

All

Profile

All

Migration Group

All

SQL Edition

All

Environment

All

Tags

All

Storage Details

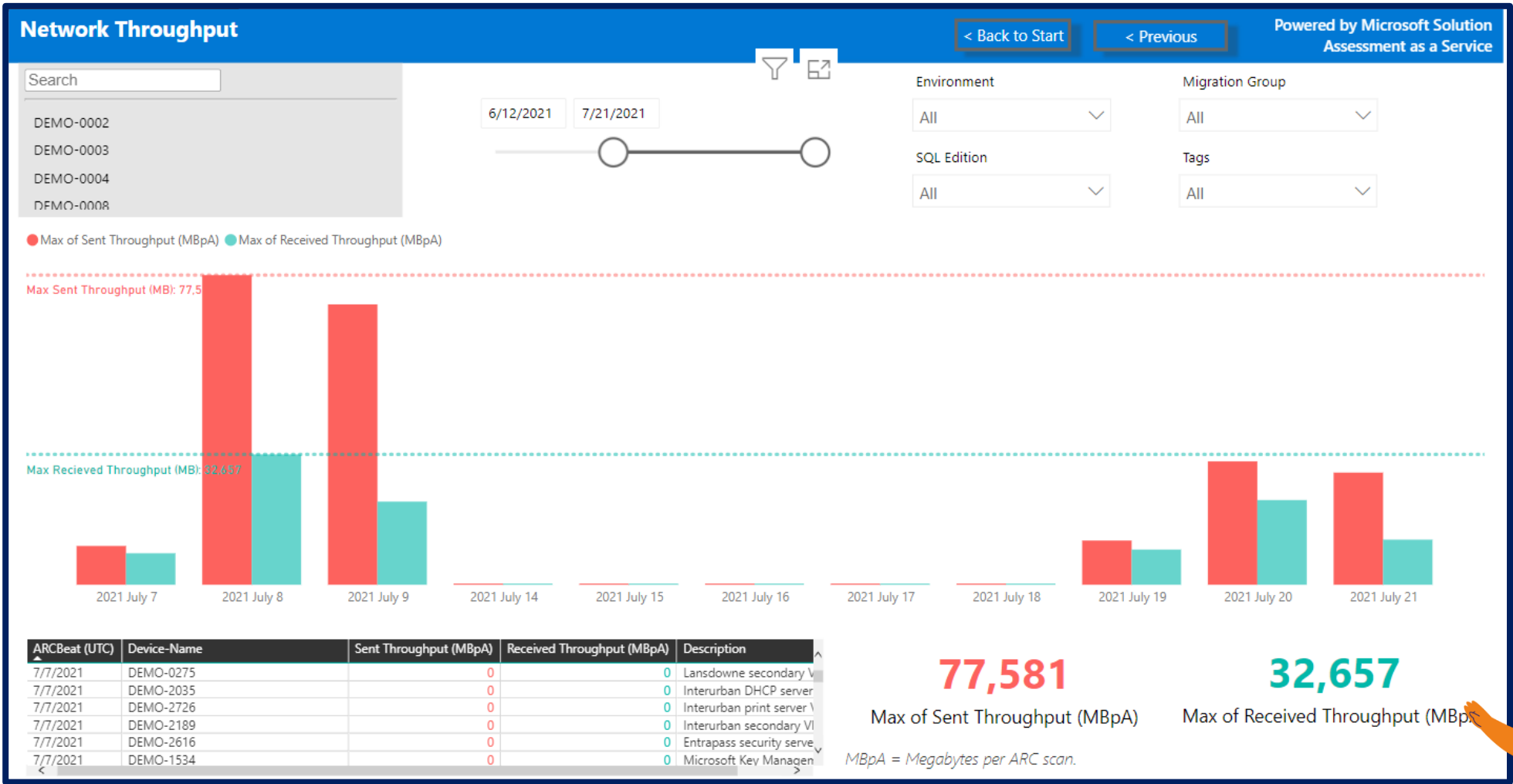
Device-Name	Drive Letter	Total (GB)	Used (GB)	Available (GB)	Avg IOPS
DEMO-0677	I:	5,589	3,493	2,095	269
DEMO-1422	E:	5,589	62	5,527	2767
<b>Total</b>		<b>92,337</b>	<b>39,773</b>	<b>52,543</b>	<b>65248</b>

Storage Scenarios

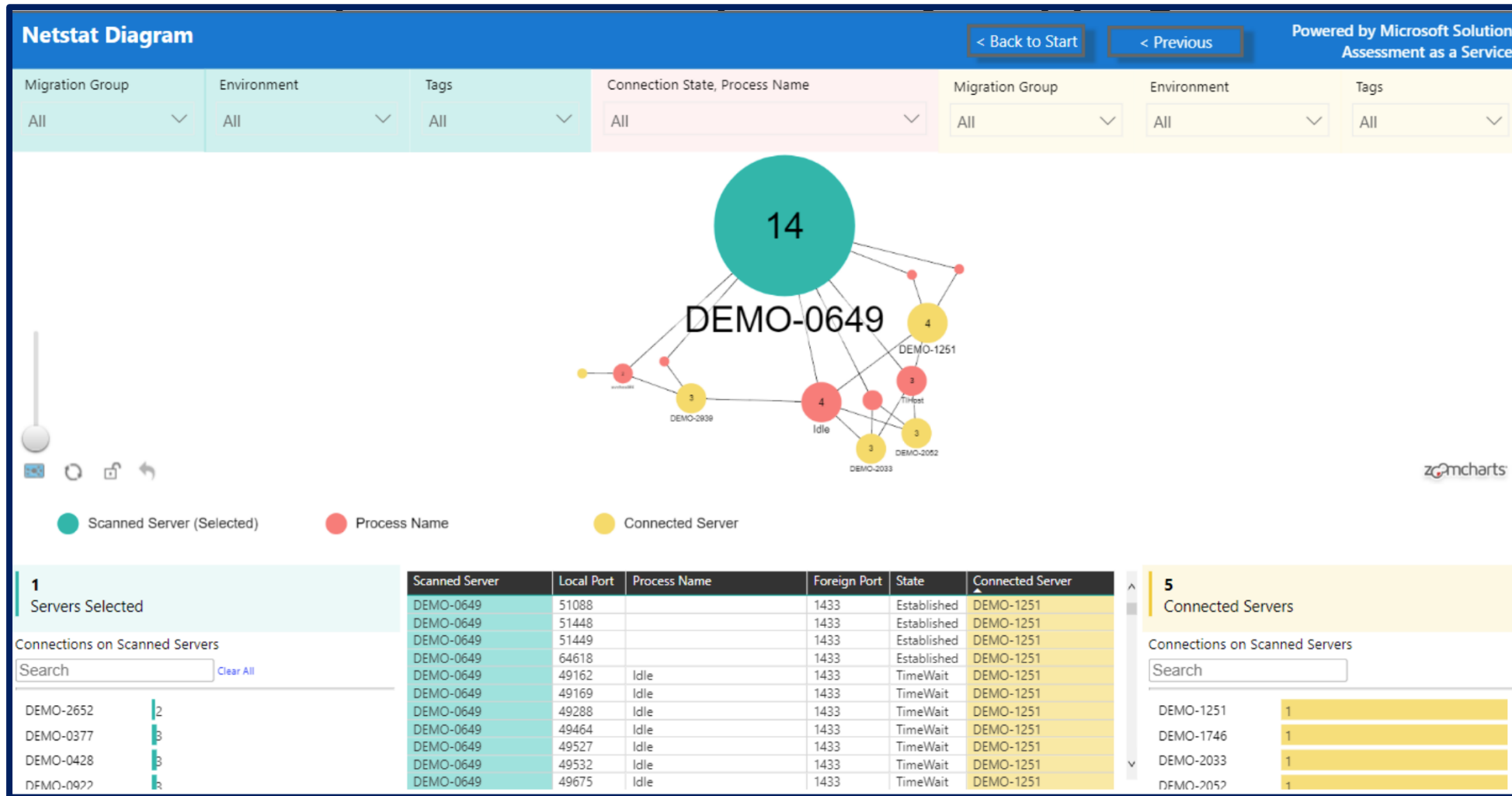
Storage Scenario Device-Drive	1. As-Is			2. Right-Sized			3. Cost-Optimized		
	Profile	Size	Cost Month	Profile	Size	Cost Month	Profile	Size	Cost Month
DEMO-0010/C:	S6	64	4.24	S6	64	4.24	S4	32	2.16
DEMO-0022/?:	S20	512	30.64	S20	512	30.64	S10	128	8.29
DEMO-0024/?:	S20	512	30.64	S20	512	30.64	S10	128	8.29
<b>Total</b>	<b>P10</b>	<b>187,776</b>	<b>13,860.66</b>	<b>E1</b>	<b>190,432</b>	<b>15,442.41</b>	<b>E1</b>	<b>75,640</b>	<b>5,340.61</b>



# Network Throughput



# Infrastructure Optimization - Dependency Mapping



# Performance



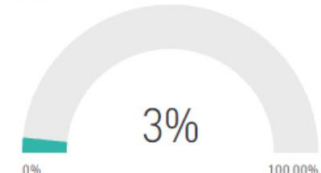
[< Back to Start](#)
[< Previous](#)
Powered by Microsoft Solution Assessment as a Service

## 169

Servers

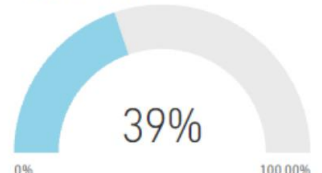
- DEMO-0010
- DEMO-0054
- DEMO-0055
- DEMO-0079
- DEMO-0136
- DEMO-0215
- DEMO-0252
- DEMO-0275
- DEMO-0286
- DEMO-0289
- DEMO-0292
- DEMO-0294
- DEMO-0299

Average CPU Usage




3%

Average RAM Usage



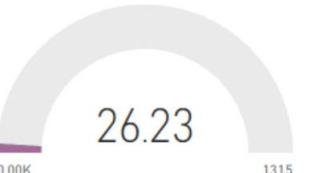
39%

Average Disk IOPS




395

Average Disk Throughput




26.23


On-Prem Core Count




On\_prem Total RAM (GB)




Avg CPU%




Avg RAM%



Avg IOPS



Disk Throughput (MB/sec)



Server Name

Migration Group

SQL Edition

Environment

Platform

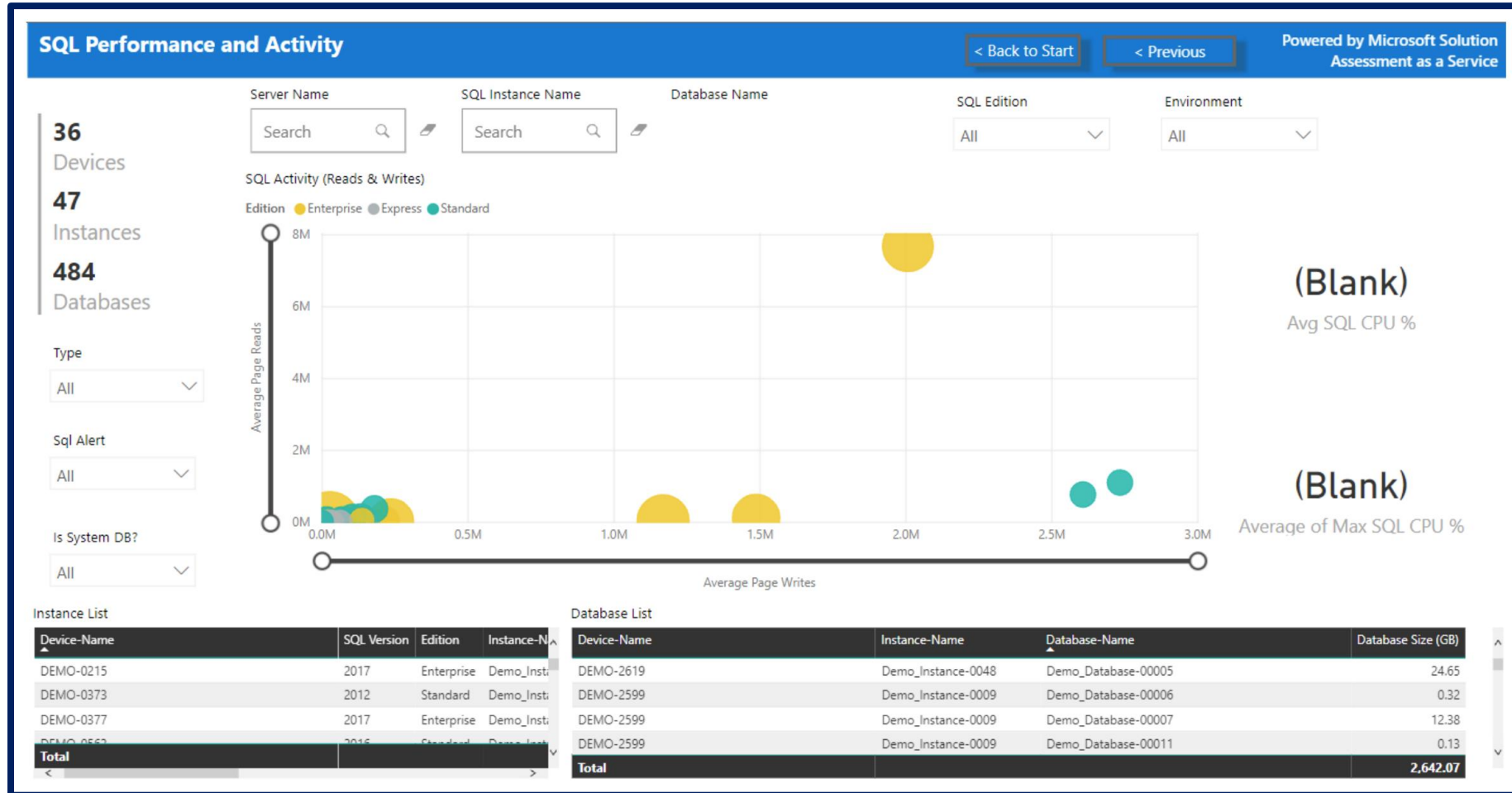
Hosting Location

Tags

On-Premises Performance

Device-Name	ARC Scanned	Core Count	Avg CPU%	99 CPU%	Total RAM (GB)	Avg RAM%	99 RAM%	NIC Count	Drive Count	99 Disk IOPS	99 Disk Thrpt. (MB/sec)	Used Storage (GB)	Total Storage (GB)	Platform	Operating System
DEMO-0010	Yes	2	2%	7%	4	61%	65%	1	1	53	1	25	39	VMware	Windows Server 2016
DEMO-0054	Yes	2	2%	9%	8	27%	34%	1	1	272	132	22	39	VMware	Windows Server 2016
DEMO-0055	Yes	4	3%	12%	4	39%	41%	1	1	63	3	20	40	VMware	Windows Server 2016
DEMO-0079	Yes	2	1%	6%	4	52%	58%	1	2	117	4	239	579	VMware	Windows Server 2016
DEMO-0136	Yes	2	0%	1%	4	19%	21%	2	12	77	1	27	39	VMware	Ubuntu 20.04.2 LTS
DEMO-0215	Yes	4	8%	22%	12	74%	84%	1	2	883	1315	83	120	VMware	Windows Server 2016
DEMO-0252	Yes	2	4%	11%	8	24%	27%	1	1	88	4	48	80	VMware	Windows Server 2016
DEMO-0275	Yes	1	2%	10%	4	56%	60%	1	1	185	5	21	40	VMware	Windows Server 2016

# SQL Performance – AverageReads & Writes



# Sustainability



## Sustainability Analysis

< Back to Start

< Section Menu

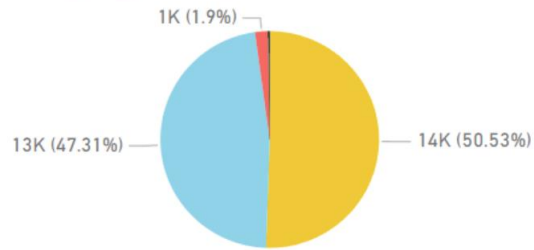
Powered by Microsoft Solution Assessment as a Service

### On-Premises Server Size



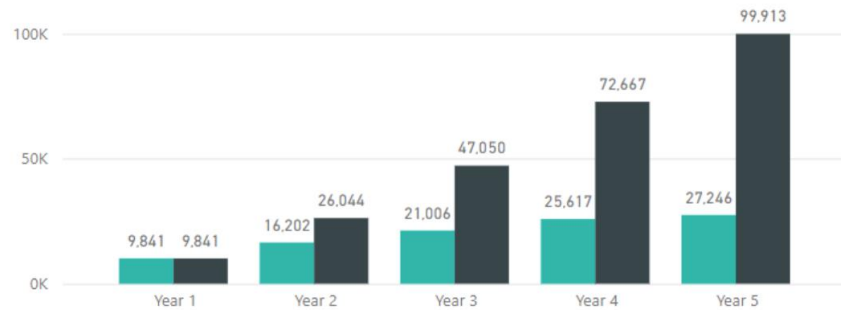
### 1-Year Carbon Footprint (KgCO2) by Emission Category

Category ● Manufacturing ● Use ● End of Life ● Transport



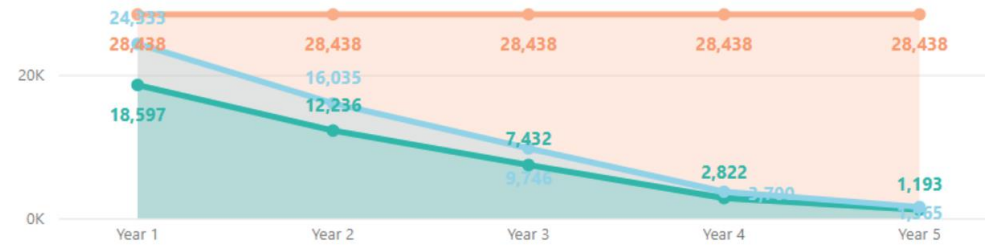
### Sustainability Benefits

● Carbon Footprint Reduction ● Cumulative Reduction



### Carbon Footprint (KgCO2): OnPrem vs Cloud

● On-Premises ● Azure Right-Sized ● Azure As-Is



Microsoft believes buying clean energy helps us operate sustainably. By 2025, we will shift to 100 percent use of renewable energy. By 2030 we will be carbon-negative. ([Learn More](#))

### 5-Year Carbon Footprint Reduction and Equivalencies

KgCO2	Vehicles for 1 Year	Homes Electricity for 1 Year	Smartphones Charged	Acres of Forest Saved
99,912	22	18	12,153,560	122

Over 5 years, the total carbon footprint reduction estimated is 99,912 Kg of CO2 emissions.

This is equivalent to any of the following:

- 22 passenger vehicles driven for 1 year.
- Powering 18 homes for 1 year.
- Charging 12.15 million smartphones.
- 122 acres of forest free to clean carbon from other emission sources.



# BVA



## Business Value - Cash Flow

< Back to Start

< Section Menu

< Back to Azure VMs

CAD  
Currency

canadacentral  
Azure Region



**304**

Sized Servers

**53,426.42**

Initial OnPrem Budget

**175.74**

Average Cost per VM

**68,096**

Migration Budget

**224**

Cost per VM

**25,401.67**

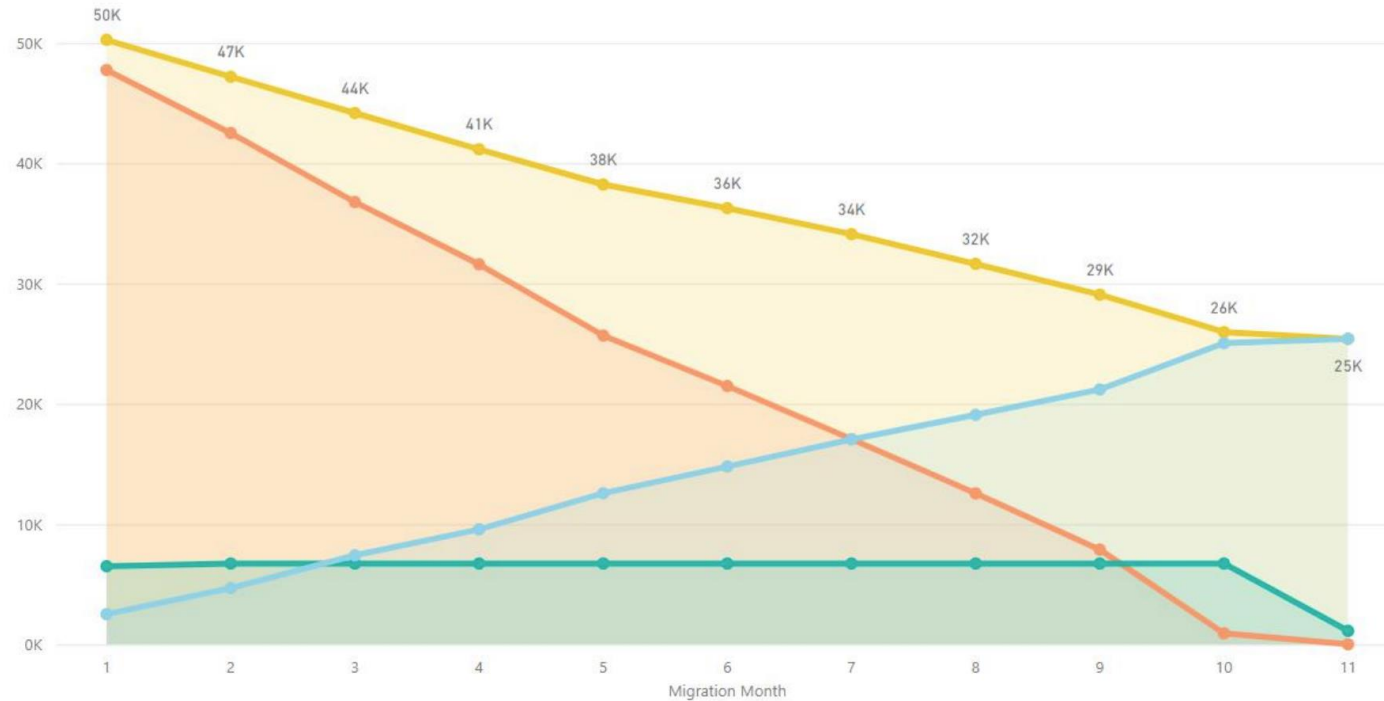
Final Azure Budget

**83.56**

Average Cost per VM

Month	VMs	OnPremCost	AzureVMCost
1	29	5,685.96	2,511.41
2	30	5,240.09	2,170.49
3	30	5,731.81	2,718.11
4	30	5,173.18	2,159.66
5	30	5,928.09	3,001.26
6	30	4,191.33	2,225.87
7	30	4,419.88	2,255.13
8	30	4,505.97	2,035.60
9	30	4,674.15	2,113.94
10	30	6,953.10	3,845.16
11	5	922.84	365.04
<b>Total</b>	<b>304</b>	<b>53,426.42</b>	<b>25,401.67</b>

● Total Budget ● OnPrem Budget ● Migration Budget ● Azure Budget



**28,024.75**

Monthly Savings after Migration

**52.45%**

Savings%





# MICROSOFT 365 MIGRATION



# Multi-workload migration



 Office 365

 OneDrive

 Exchange Online

 SharePoint Online

 Exchange

 Microsoft Azure

## MAILBOXES

Microsoft Office 365  
Office 365 Groups  
Exchange 2003+  
Gmail/GSuite  
Lotus Notes  
GroupWise  
Zimbra  
Open-Xchange  
IMAP  
POP

## DOCUMENTS

Microsoft OneDrive for Business  
Office365 Groups  
Google Drive  
SharePoint  
FileServer  
Box  
Dropbox

## PERSONAL ARCHIVES

Exchange Archives  
PST Files  
Google Vault

## PUBLIC FOLDERS

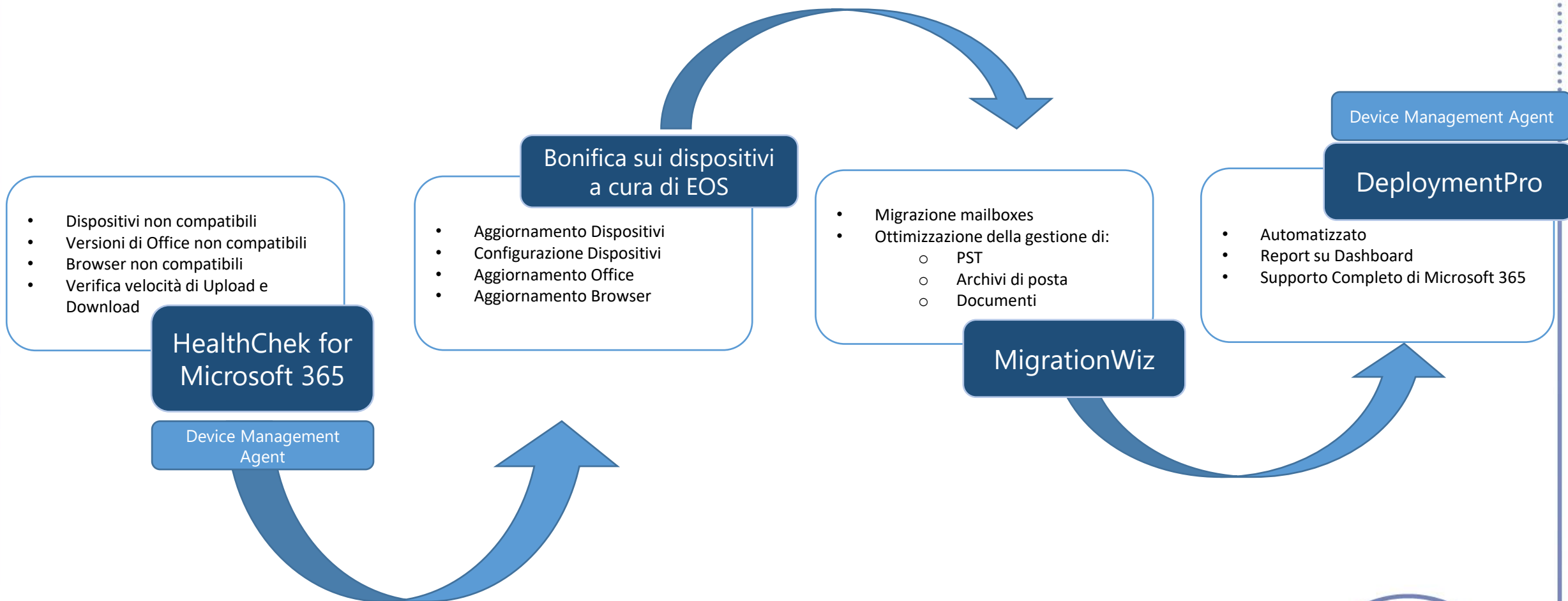
Exchange Public Folders

## CLOUD STORAGE

Amazon S3  
Azure Blob



# Migrazione posta



# DeploymentPro for Outlook reconfig

Utilizzando **DeploymentPro** è possibile gestire la configurazione di Outlook nel momento del cutover



## Configure

Show us the desktops to manage and the operations to perform.



## Deploy

Deploy our light agent to each desktop using one of several supported methods.



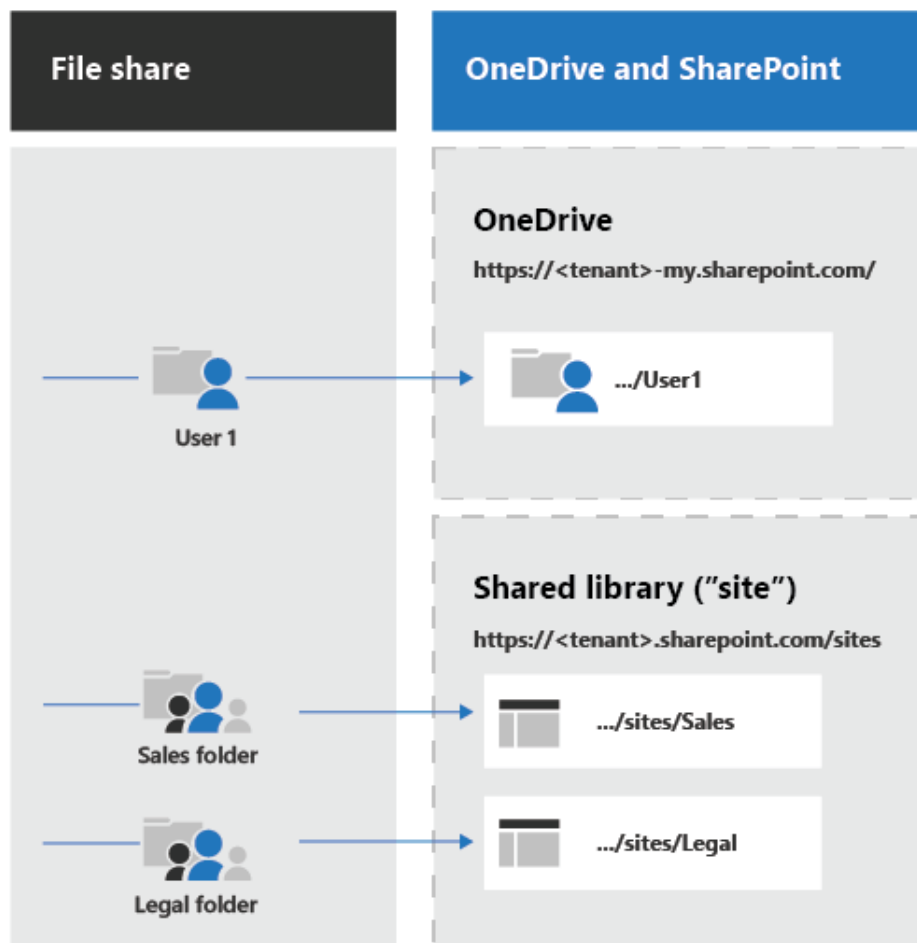
## Monitor

Monitor the status of the agents directly from MSPComplete.

## Configurare Outlook da remoto

- Allegare i file PST esistenti
- Mantenere le impostazioni locali di Outlook
- Personalizzare l'esperienza dell'utente finale
- Mantenere le firme e completamenti automatici

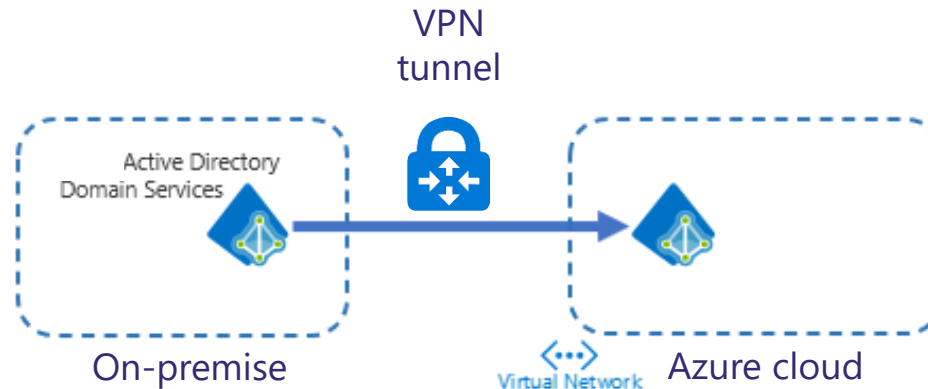
# Migrazione file



Spostare i file nel cloud senza doversi preoccupare dei backup!

Installando semplicemente un agent in uno dei server onprem sarà possibile orchestrare la migrazione utilizzando il portale di Microsoft 365

# Migrazione Active Directory



## Active Directory in cloud

E' possibile spostare anche i servizi Active Directory in cloud per non avere più alcun server da mantenere onprem. Tramite un tunnel VPN che connette i siti onprem al cloud Azure i servizi Active Directory e DNS possono essere gestiti anche con una vm in cloud



# JOURNEY TO AZURE



**Alberto Duò**  
Azure Architet

# Destinazioni

## Cloud Only (Lift and Shift)

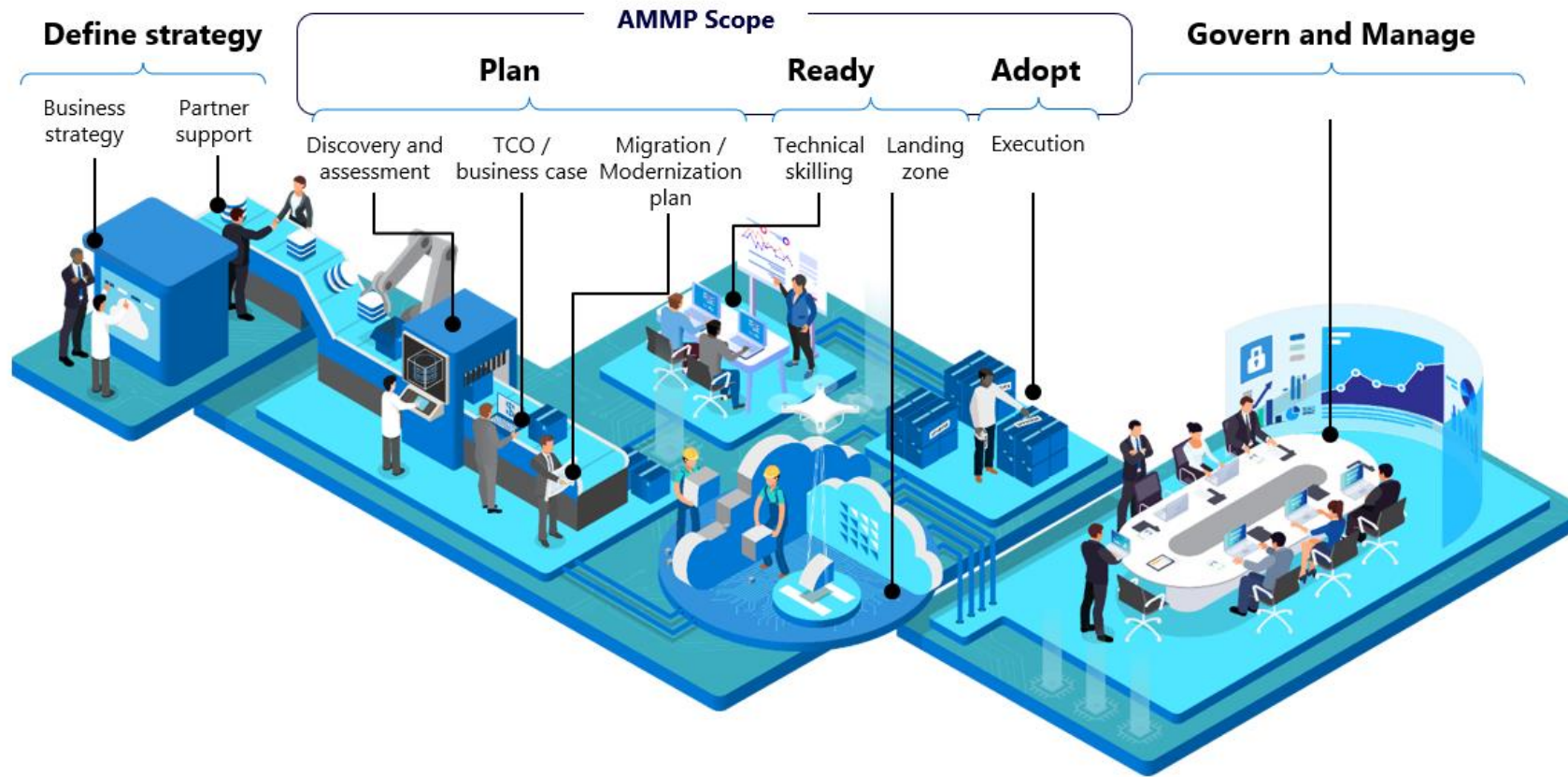
- **Obiettivo:** rimuovere tutti i carichi di lavoro dal locale al cloud
- **Migrazione** dei Servizi di dominio Active Directory locali
- **Destinazione finale:** solo i client sono presenti in locale, tutti i carichi di lavoro in esecuzione in Azure

## Hybrid

- Spostare alcuni carichi di lavoro in Azure
- Hybrid Identity
- Spostare alcuni carichi di lavoro locali ospitati in Windows Server in sistemi gestiti come Azure Stack
- Conservare alcuni carichi di lavoro locali esistenti fino a quando non possono essere spostati in Azure



# Cloud Adoption Framework



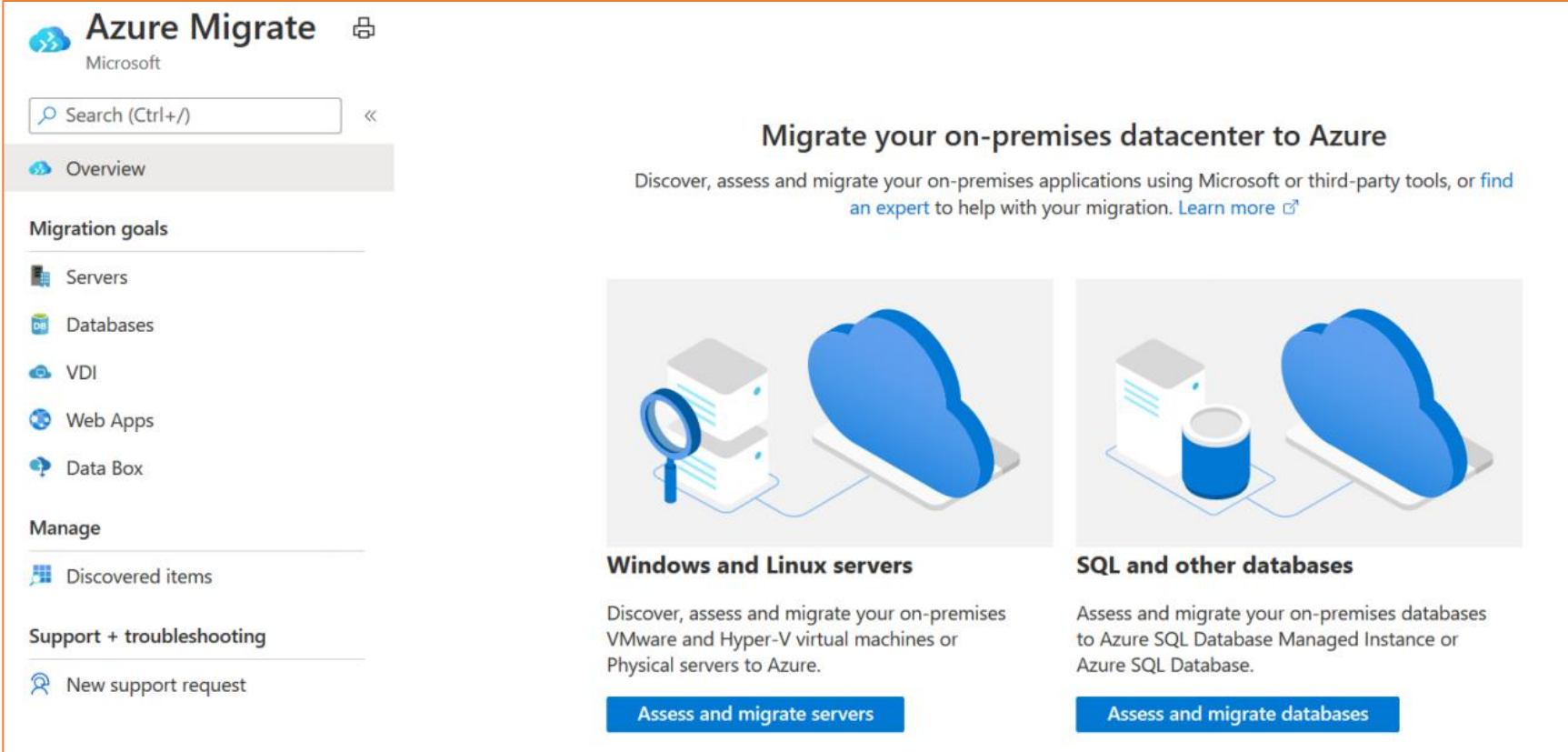
# CAF: Azure Landing Zone

Design Area	Obiettivi
Enrollment Aziendale	Verifica dei Tenant Aziendali
Identità	Verifica della gestione delle identità e degli accessi
Network e connettività	Verifica della corretta configurazione di rete per i workloads
Governance	Controllo della sicurezza e delle policy di conformità
Operatività	monitoraggio, gestione degli aggiornamenti e configurazione delle compliance
Business Continuity/Disaster Recovery	Backup e ripristino per proteggere dati e carichi di lavoro. Garantire continuità operativa durante le interruzioni



# Azure Migrate

Hub centralizzato per valutare e migrare i server locali, infrastruttura, applicazioni e dati in Azure



**Azure Migrate** Microsoft

Search (Ctrl+ /) <<

Overview

**Migration goals**

- Servers
- Databases
- VDI
- Web Apps
- Data Box

**Manage**

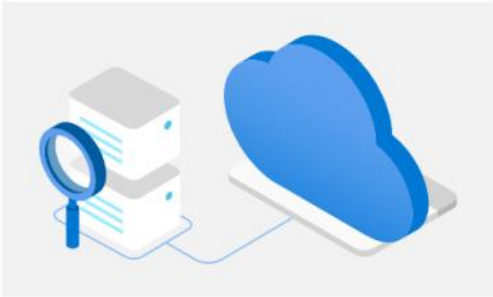
- Discovered items

**Support + troubleshooting**

- New support request

### Migrate your on-premises datacenter to Azure

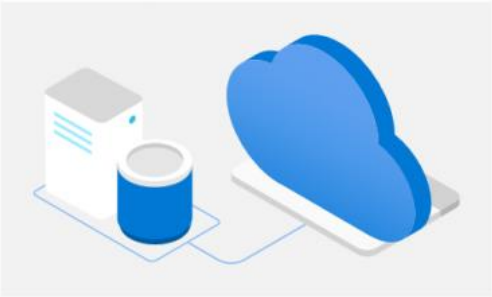
Discover, assess and migrate your on-premises applications using Microsoft or third-party tools, or [find an expert](#) to help with your migration. [Learn more](#)



**Windows and Linux servers**

Discover, assess and migrate your on-premises VMware and Hyper-V virtual machines or Physical servers to Azure.

[Assess and migrate servers](#)



**SQL and other databases**

Assess and migrate your on-premises databases to Azure SQL Database Managed Instance or Azure SQL Database.

[Assess and migrate databases](#)



# STRATEGIE DI MIGRAZIONE PER SQL SERVER E APPLICAZIONI



# Azure Data Services

## SQL Server on Azure Virtual Machines



Best for re-hosting and apps requiring OS-level access and control  
Automated manageability features and OS-level access

Infrastructure as a Service

## Azure SQL Managed Instance



Best for modernizing existing apps  
Offers high compatibility with SQL Server and native VNET support

Platform as a Service

## Azure SQL Database



Best for building new apps in the cloud  
Pre-provisioned or serverless compute and Hyperscale storage to meet demanding workload requirements

# SQL Server on Azure virtual machines



## Customer challenge

I want to migrate to the cloud as fast as possible but maintain operating system control and complete SQL Server functionality



## Solution

Get the combined performance, security, and analytics of SQL Server, backed by the flexibility, security, and hybrid connectivity of Azure

## Key features

- SQL Server and OS server access
- Expansive SQL and OS versions
- Windows, Linux, Containers
- File stream, DTC, and Simple Recovery model
- SSAS, SSRS, and SSIS

## Azure differentiators

- Free Extended Security Updates for SQL Server 2008/R2
- Automated Backups and Security Updates
- Point in Time Restore with Azure Backup
- Accelerated storage performance with Azure Blob Caching
- 435 percent overall return on an Azure IaaS investment over five years<sup>1</sup>

# Azure SQL DB



## Customer challenge

I want to build modern apps, potentially multi-tenanted, with the highest uptime and predictable performance



## Solution

Azure SQL Database is a highly scalable cloud database service with built-in high availability and machine learning

## Key features

- Single database or elastic pool
- Hyperscale storage (100TB+)
- Serverless compute
- Fully managed service
- Private link support
- High availability with AZ isolation

## Azure differentiators

- Industry highest availability SLA of 99.995%
- Industry only business continuity SLA with 5 second RPO and 30 second RTO
- Price-performance leader for mission-critical workloads while costing up to 86 percent less than AWS RDS (GigaOm)

# Azure SQL DB Service Tiers



\*Not in managed instance

# Azure SQL DB Managed Instance



## Customer challenge

I want to migrate to the cloud, remove management overhead, but I need instance-scoped features (Service Broker, SQL Server Agent, CLR...)



## Solution

Managed instance combines leading security features with SQL Server compatibility and business model designed for on-premises customers

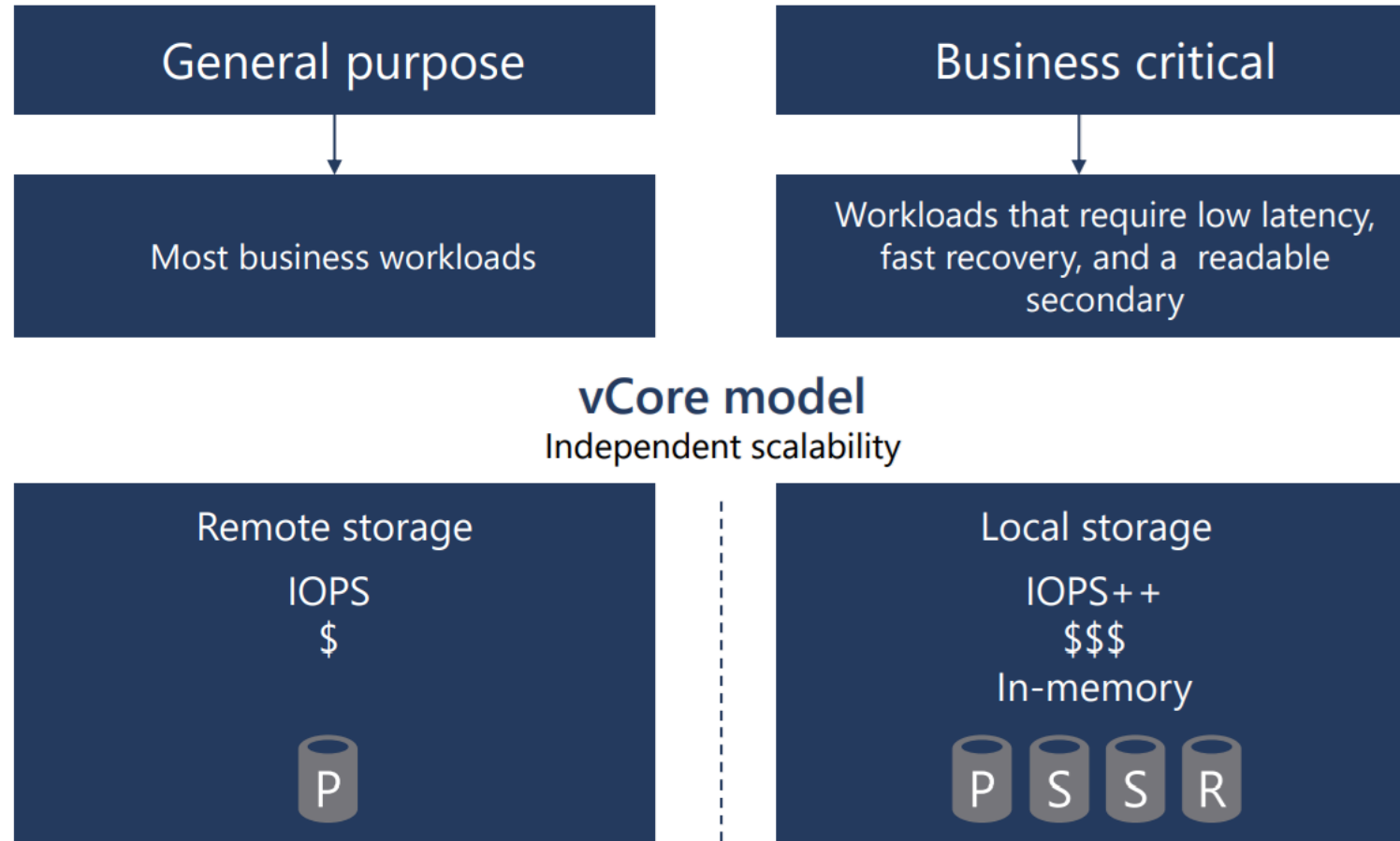
## Key features

- Single instance or instance pool
- SQL Server surface area (vast majority)
- Native virtual network support
- Fully managed service
- On-premise identities enabled with Azure AD and AD Connect

## Azure differentiators

- Near zero downtime migration using log shipping
- Fully managed business continuity with failover groups
- Projected return on investment of 212 percent over three years<sup>1</sup>
- The best of SQL Server with the benefits of a managed service

# Azure SQL DB Managed Instance Service Tiers





# PostgreSQL, MariaDB, MySQL



## Fully managed community database

Take advantage of a fully managed service while still using the tools and languages you're familiar with



## Built-in high availability for lowest TCO

Ensure your data is always available without the need for additional costs



## Intelligent performance and scale

Improve performance with built-in intelligence and up to 16TB storage and 20K IOPs



## Industry-leading security and compliance

Protect your data with enhanced security features including Advanced Threat Protection



## Integration with the Azure ecosystem

Build apps faster with Azure services and safeguard your innovation with Azure IP Advantage



# MIGRARE WINDOWS SERVER



# Requisiti

## VMware

Migrate VMware virtual machines running Windows and Linux OS to Azure VMware Service

## Hyper-V

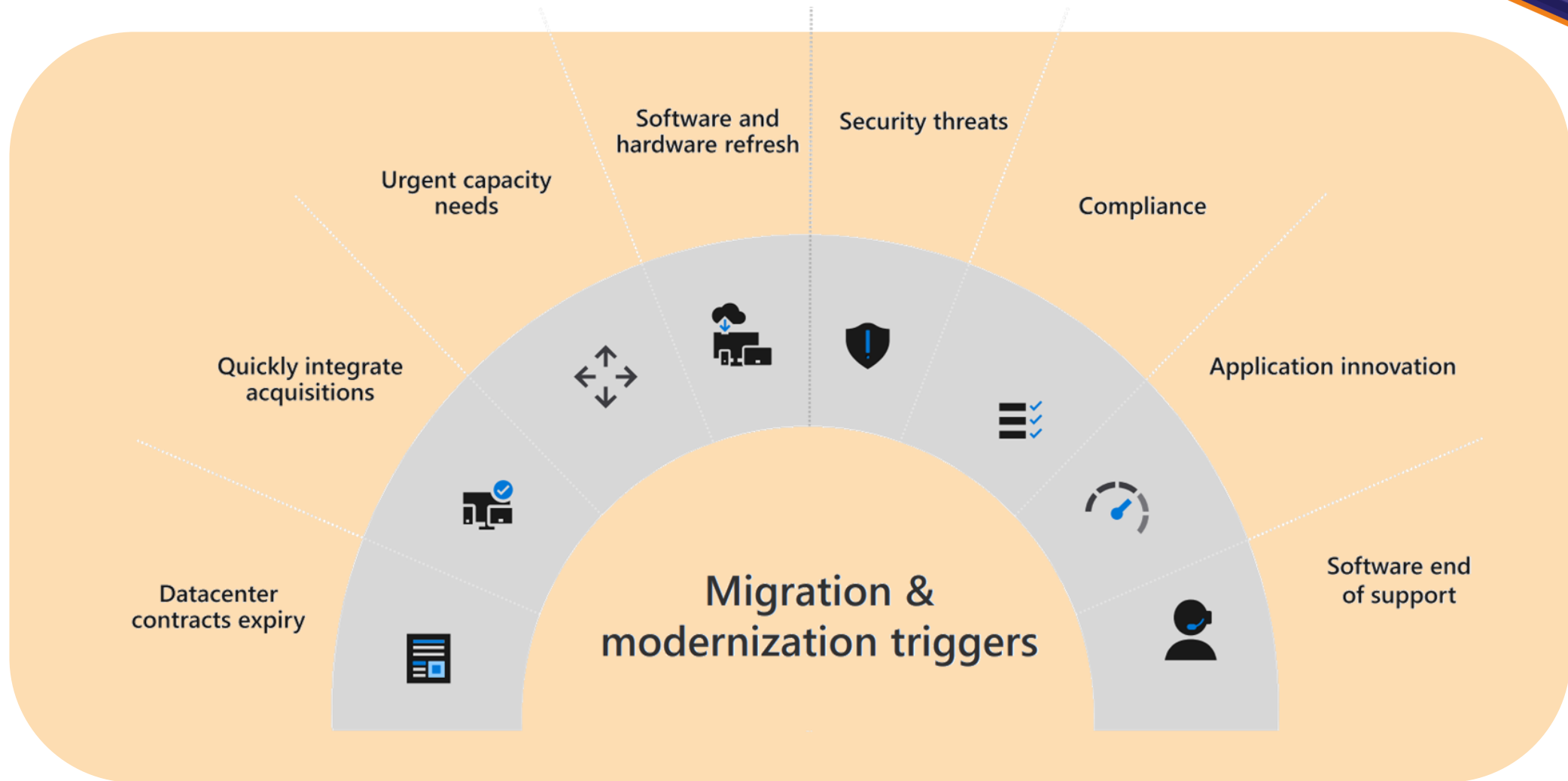
Migrate Hyper-V VMs running Windows and Linux OS to Azure IaaS VMs

## Physical

Migrate physical machines running Windows and Linux OS to Azure IaaS VMs



# Triggers di migrazione



# End of Support



No security updates



Compliance & regulatory concerns



Additional cost for support + patches



Missed innovation opportunities



2008 | R2



Windows Server



Ended January 14, 2020



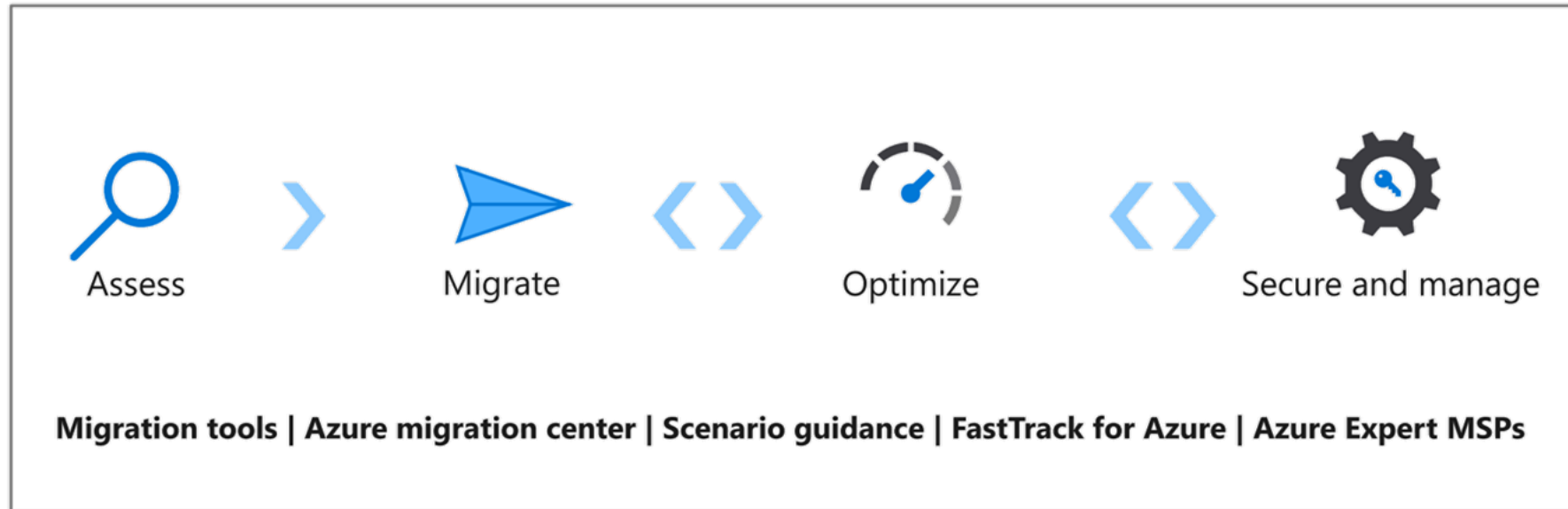
SQL Server



Ended July 9, 2019

**Rappresenta un'opportunità per modernizzare l'infrastruttura**

# Esperienza di migrazione ad Azure unificata ed estensibile



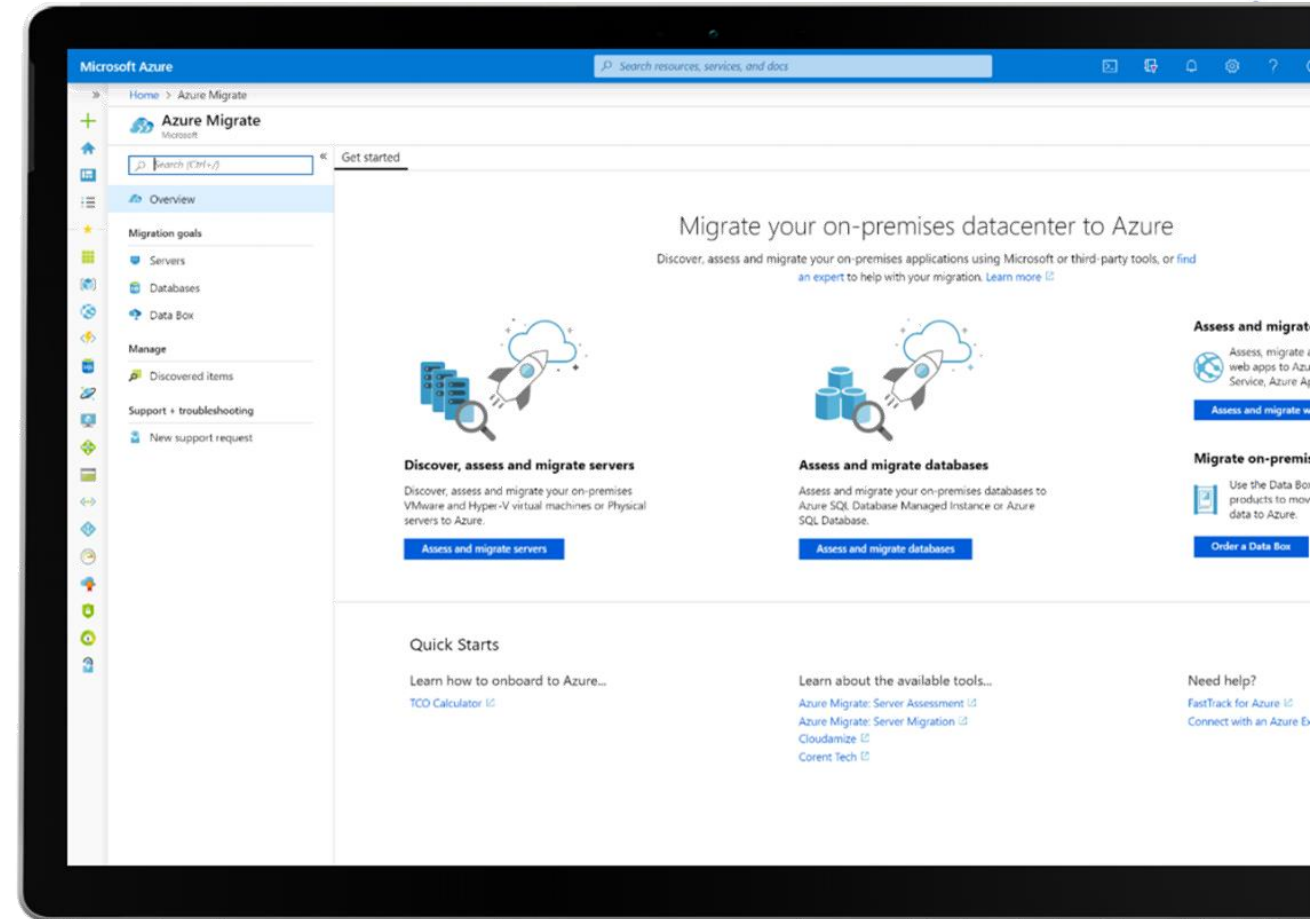
## Azure Fundamentals

Target architecture | Governance | Connectivity | Security | Training & Readiness

# Azure Migrate

Il Team EOS vi aiuta a migrare verso il cloud:

- **Migrazione Agentless:**  
*Windows Server & Linux*
- **VMware, Hyper-V, Physical** server
- Migrazione dati **SQL / Non-SQL**
- Migrazione **Web app** vs Azure App Service
- Migrazione da **on-premises, AWS, & GCP**



# Strumenti per ogni fase e per ogni esigenza

Goal is successful Azure migration: Pick the right tool for the job



Assess



Migrate



Optimize



Secure & Manage

Azure Migrate: Server Assessment

Data Migration Assistant (DMA)

SQL Server Migration Assistant (SSMA)

Azure Migrate: Server Migration

Azure Database Migration Service

Azure Data Box

Azure Cost Management

Azure Advisor

Azure Security & Management  
(e.g., Blueprints, Security Center,  
Backup, Monitor)

We embrace ISV solutions

MOVERE

Cloudamize

CloudAtlas®

BitTitan

CHEF

STRATOZONE®

turbonomic

Zerto

Corent

intigua

stiim

ATTUNITY

DATOMETRY

MORPHIS

Ispirer

Informatica

QuerySurge



# Migrazione delle VM Hyper-V



- **Deploy** di Azure Migrate: strumento di Migrazione Server nell'ambiente Hyper-V che ospita le VM da migrare
- **Discover** delle VMs da migrare e ne valuta le dipendenza
- **Replica** delle VM in Azure
- **Esecuzione** di una migrazione di prova per verificare il corretto funzionamento
- **Esecuzione** della migrazione

# Migrazione dei workloads VMware

---

## Migrazione verso la soluzione Azure VMware o Azure IaaS VM

Per migrare verso la soluzione Azure VMware, deploy e configurazione di VMware HCX

- **Deploy** on-premises VMware HCX OVA (Connettore)
- **Attivazione** VMware HCX
- **Associare** l'ambiente on-premises alla soluzione Azure VMware
- **Configurare** l'interconnessione (compute profile, network profile(s) e service mesh)
- **Verifica** dello stato dell'appliance
- **Migrazione** on-premises VMware VMs con VMware HCX

**Per migrare verso Azure IaaS VMs, usare Azure Migrate**



# Migrazione dei server fisici

Per migrare i server fisici serve un appliance di replica dei seguenti componenti

- Configuration server:  
Questo server **coordina** le **comunicazioni tra on-premises e Azure**.  
**Gestisce** inoltre la **replica dei dati** su Azure.
- Process server: funziona come **replication gateway**

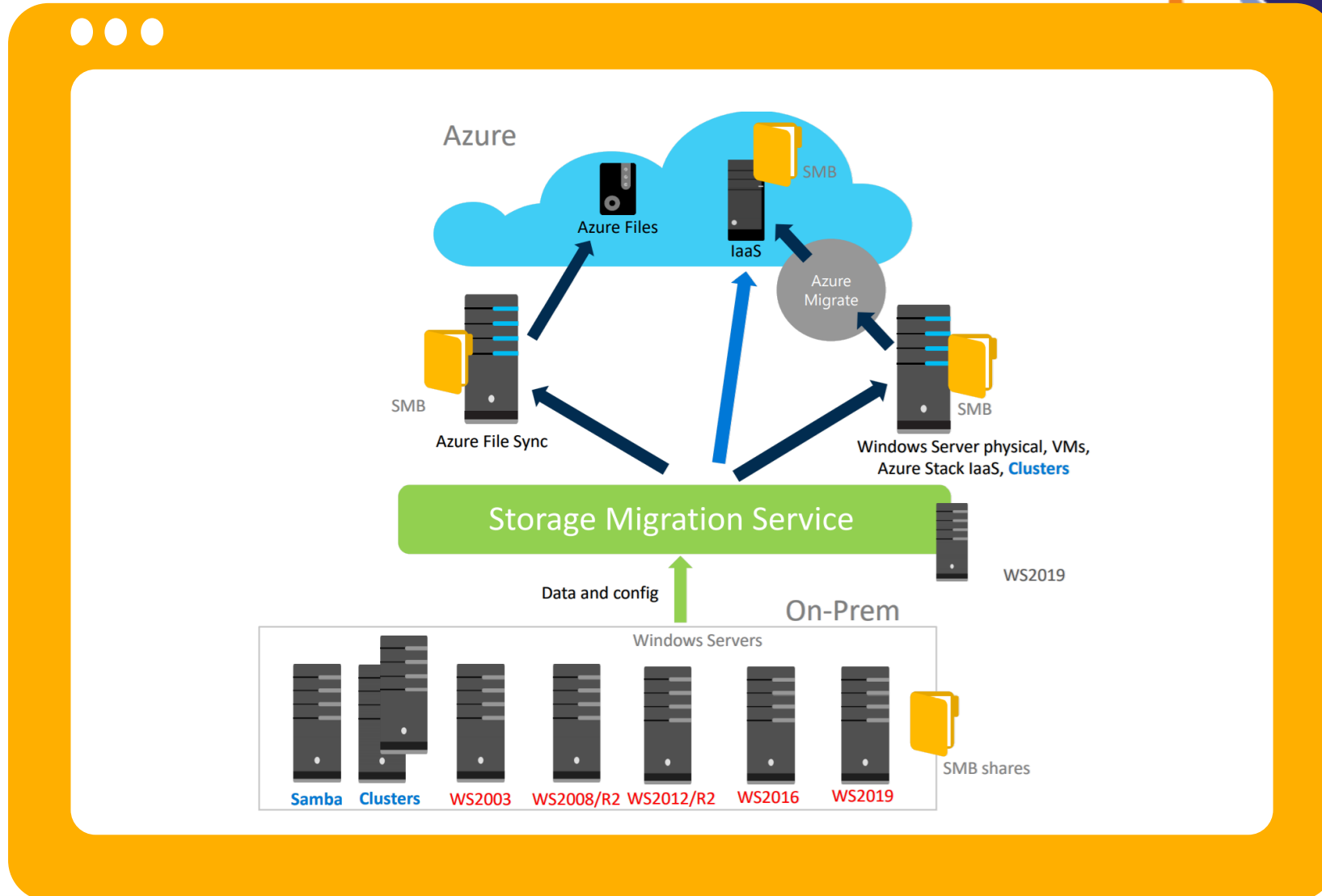
L' appliance di replica usa MySQL e deve comunicare con un-Azure URL.

Dopo il deploy dell'appliance di migrazione, è possibile valutare e migrare i server fisici su Azure.

È necessario installare il mobility service agent su ogni macchina fisica che si desidera migrare.



# Storage migration server





# BUSINESS CENTRAL SAAS MIGRATION



**Giuseppe Russo**  
Cloud Solution Architect  
Microsoft



# Dynamics 365 Business Central Road to Cloud

# Il cambiamento è continuo



## Stake holder expectations

- Customer expectations
- Business transformation
- Modelli di business in evoluzione



## Speed of innovation

- I fattori geo-politici, ambientali e competitivi continueranno a forzare i cambiamenti
- Quale tecnologia resisterà



## Agility

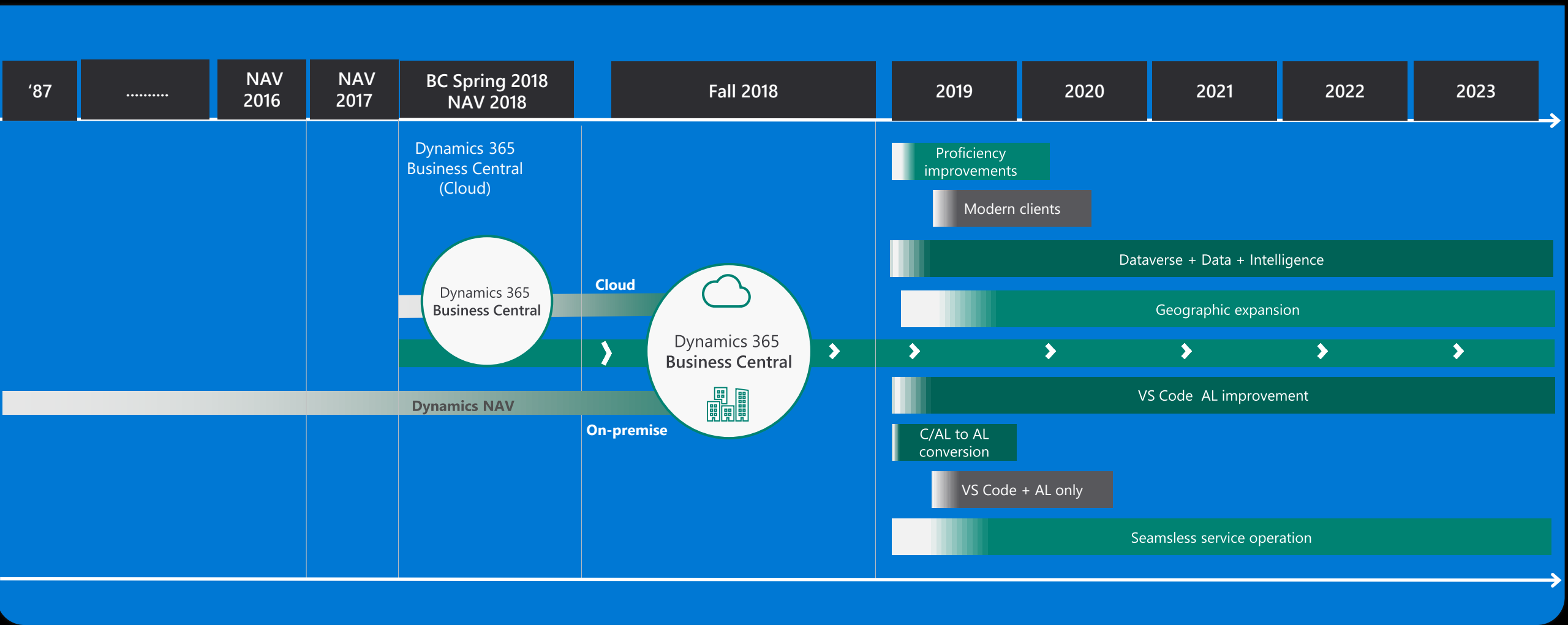
- Mantenere le risorse con la riduzione delle competenze interne
- Piattaforme e applicazioni fuori dal supporto



## Security and Compliance

- Regulatory compliance, Sustainability
- Assicurare la continuità del business
- Data security

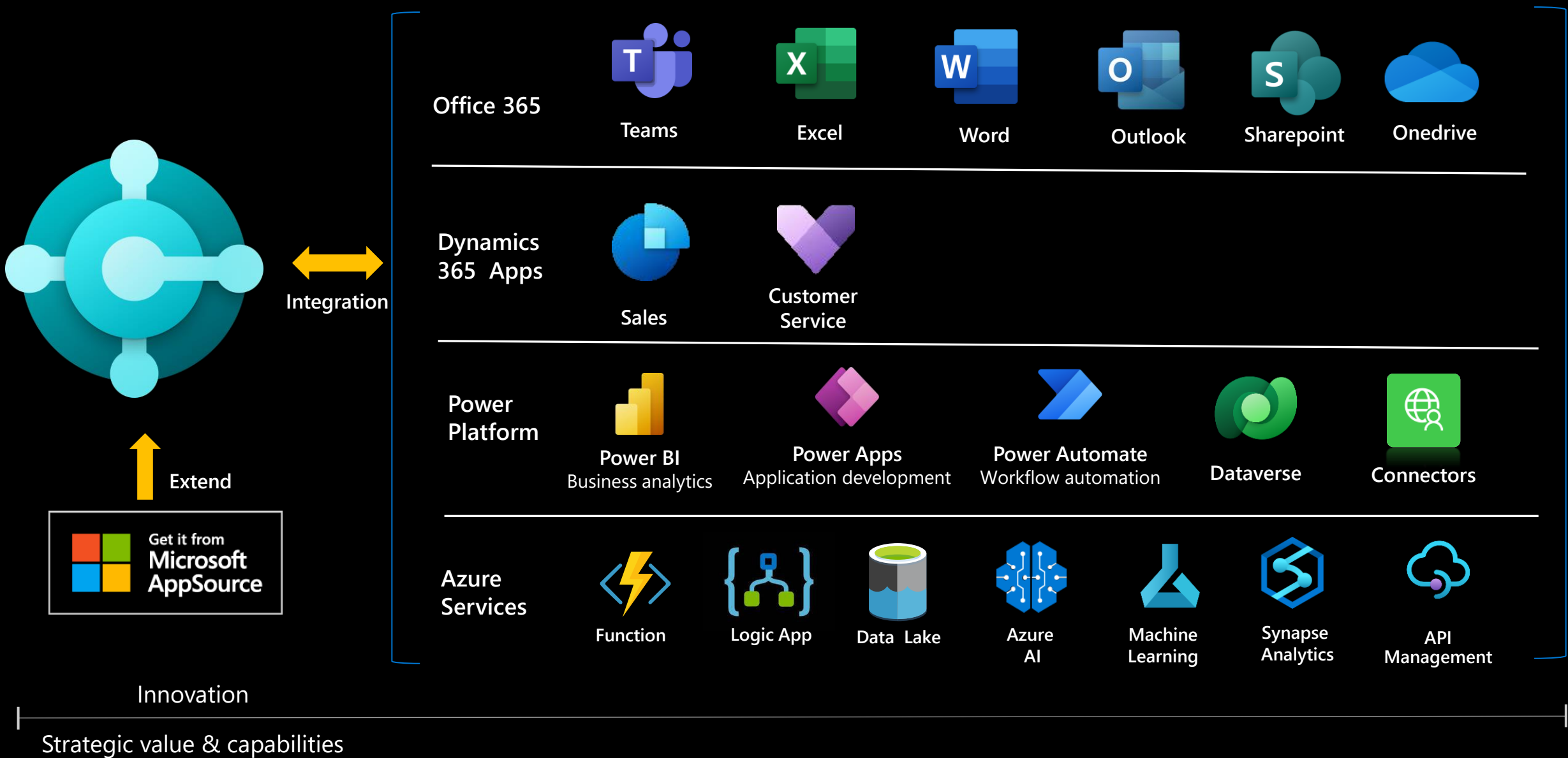
# Product Roadmap





# Business Central online – un'unica soluzione

La migrazione al cloud è l'ultimo importante aggiornamento



# Perché passare al Cloud di Microsoft

La migrazione al cloud è l'ultimo importante aggiornamento



Visibilità in tempo reale del tuo business



Backup e ripristino automatico



Permette flessibilità e scalabilità



24/7/365 SLA



Ottenere l'accesso a funzionalità quali l'App for Teams e i report predefiniti di Power BI



Migliorare la sicurezza, la privacy e l'affidabilità con Azure Cloud



Updates continui



Aumento della produttività, della velocità e dell'innovazione



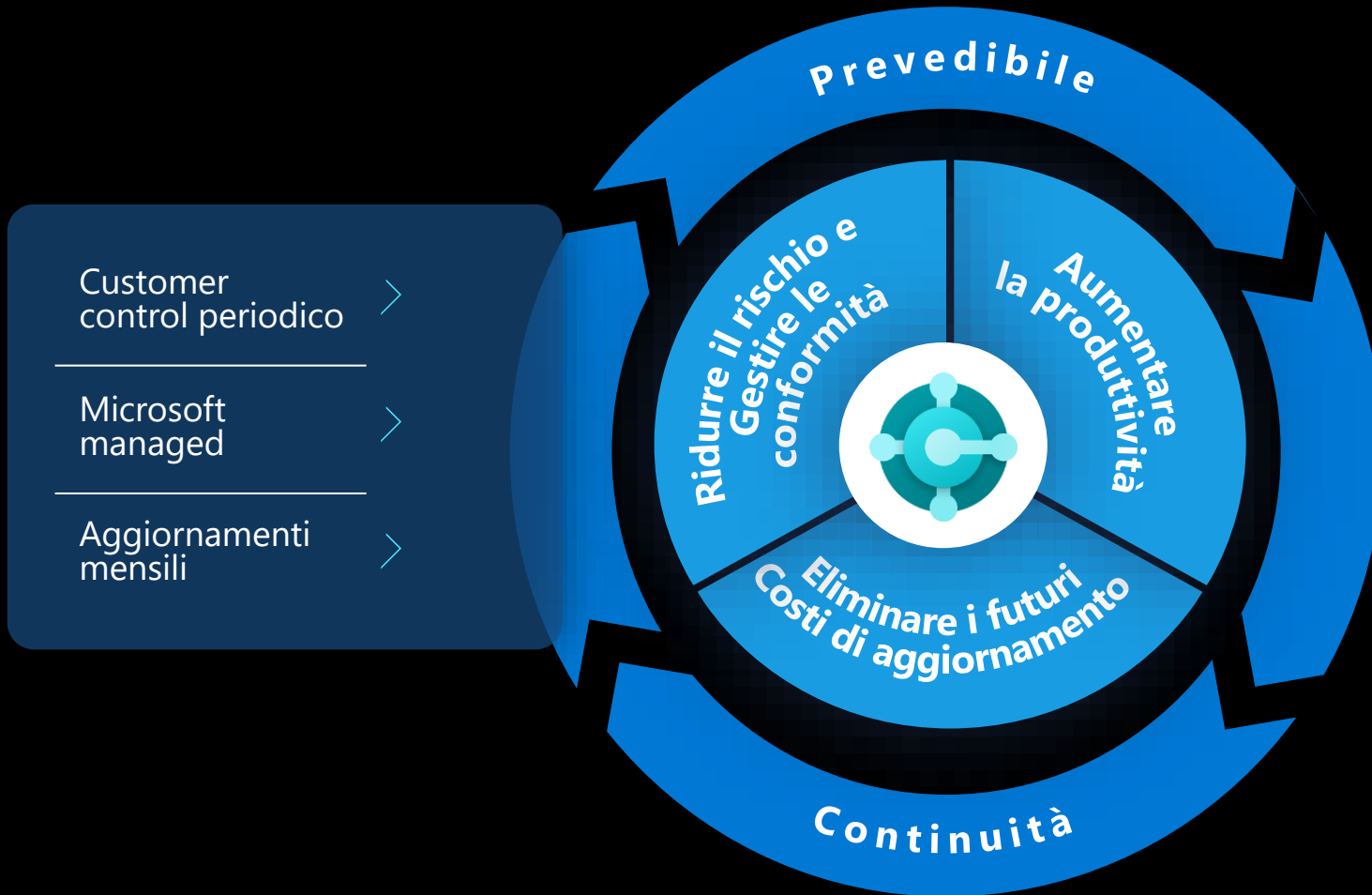
On-premise



Cloud

# Updates continui

La migrazione al cloud è l'ultimo importante aggiornamento



DIGITAL TRANSFORMATION



COST SAVINGS



COMPLIANCE

**COMPLIANCE**



# 100+

Nuove funzionalità  
negli ultimi 12 mesi

- Miglioramenti al connettore di Power Automate e Power Apps
- Miglioramenti alla finestra popout del componente aggiuntivo di C
- Miglioramenti all'integrazione con Microsoft Teams
- Miglioramenti dell'usabilità del client web
- Miglioramenti nella gestione dei set di autorizzazioni
- Migliore riconciliazione bancaria per i controlli e migliore reportistica
- Modifica del conto bancario aziendale predefinito sui documenti di
- Nuova app desktop che offre un'esperienza completa del client web
- Nuova interfaccia utente per l'inserimento delle previsioni di domand
- Nuove funzionalità per la rendicontazione finanziaria con i piani de
- Nuove pagine per l'amministrazione del layout dei report
- Nuovi eventi di reporting
- Nuovo campo Data IVA su documenti e voci
- Nuovo comando per generare o aggiornare il set di permessi AL
- Nuovo evento isolato OnCompanyOpenCompleted
- Ordinamento flessibile nella pagina del foglio di lavoro della pianifi
- Performance - i partner possono ottenere informazioni sulle statisti
- Performance - stack di dati più veloce
- Personalizzazione e progettazione delle azioni automatizzate nel cl
- Profiler delle prestazioni all'interno del client
- Pubblicare addebiti delle voci per ogni fase del processo
- Quantità fissa nelle distinte base dei prodotti
- Rendere obbligatorio l'inserimento dei codici delle varianti
- Report sull'estratto conto bancario
- Ricerca di righe di documenti postati e non postati nella ricerca
- Ricerca nei dati aziendali



# Grazie!!

# Grazie!



- Bologna
- Bolzano
- Carpi
- Cuneo
- Milano
- Padova
- Torino
- Treviso
- Udine
- Verona

**WEB**

[www.eos-solutions.it](http://www.eos-solutions.it)

SEGUICI SU

